

Datasheet for ABIN952553  
**anti-GPC1 antibody (N-Term)**

## 3 Images

[Go to Product page](#)

## Overview

Quantity:	0.4 mL
Target:	GPC1
Binding Specificity:	AA 12-41, N-Term
Reactivity:	Human
Host:	Rabbit
Clonality:	Polyclonal
Conjugate:	This GPC1 antibody is un-conjugated
Application:	Western Blotting (WB), Immunohistochemistry (Paraffin-embedded Sections) (IHC (p)), Enzyme Immunoassay (EIA), Flow Cytometry (FACS)

## Product Details

Immunogen:	KLH conjugated synthetic peptide between 12~41 amino acids from the N-terminal region of human Glypican-1 / GPC1
Isotype:	Ig Fraction
Specificity:	This antibody recognizes Human Glypican-1 / GPC1 (N-term).
Purification:	Saturated Ammonium Sulfate (SAS) precipitation followed by dialysis against PBS

## Target Details

Target:	GPC1
Alternative Name:	Glypican-1 / GPC1 ( <a href="#">GPC1 Products</a> )

## Target Details

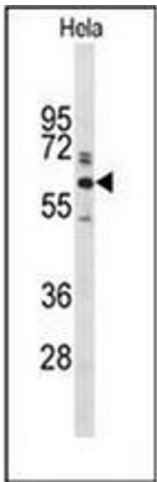
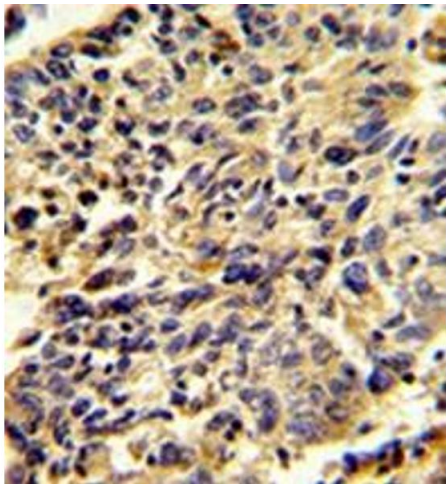
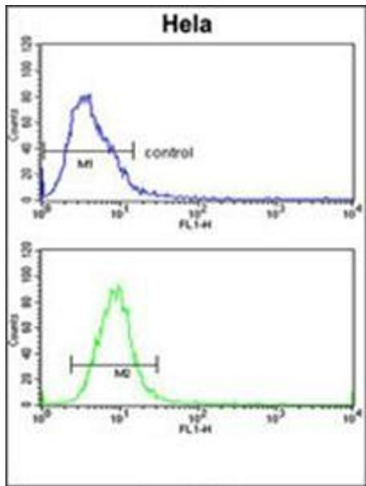
Background:	Glypican-1 (GPC1) is a cell surface proteoglycan that contains heparan sulphate. The protein is attached to the cell membrane by a GPI anchor. GPC1 is required for efficient TGF-beta1 signalling in pancreatic cancer cells. Members of the glypican-related integral membrane proteoglycan family (GRIPS) may play a role in the control of cell division and growth regulation.
Molecular Weight:	61680 Da
Gene ID:	2817
NCBI Accession:	<a href="#">NP_002072</a>
Pathways:	<a href="#">Glycosaminoglycan Metabolic Process</a> , <a href="#">Regulation of Muscle Cell Differentiation</a>

## Application Details

Application Notes:	Optimal working dilution should be determined by the investigator.
Restrictions:	For Research Use only

## Handling

Format:	Liquid
Concentration:	0.25 mg/mL
Buffer:	PBS containing 0.09 % (W/V) Sodium Azide as preservative
Preservative:	Sodium azide
Precaution of Use:	This product contains sodium azide: a POISONOUS AND HAZARDOUS SUBSTANCE which should be handled by trained staff only.
Handling Advice:	Avoid repeated freezing and thawing.
Storage:	4 °C/-20 °C
Storage Comment:	Store undiluted at 2-8 °C for one month or (in aliquots) at -20 °C for longer.



### Flow Cytometry

**Image 1.** Flow cytometric analysis of HeLa cells using Glypican-1 / GPC1Antibody (N-term) Cat.-No AP51865PU-N (bottom histogram) compared to a negative control cell (top histogram). FITC-conjugated goat-anti-rabbit secondary antibodies were used for the analysis.

### Immunohistochemistry (Paraffin-embedded Sections)

**Image 2.** Immunohistochemistry analysis in formalin-fixed and paraffin-embedded human lung carcinoma reacted with Glypican-1 / GPC1Antibody (N-term) followed which was peroxidase-conjugated to the secondary antibody, followed by DAB staining.

### Western Blotting

**Image 3.** Western blot analysis of Glypican-1 / GPC1Antibody (N-term) in HeLa cell line lysates (35ug/lane). Glypican-1 (arrow) was detected using the purified Pab.