

Datasheet for ABIN952558

**anti-GM-CSF antibody (Middle Region)**[Go to Product page](#)

## 4 Images

## Overview

Quantity:	0.4 mL
Target:	GM-CSF (CSF2)
Binding Specificity:	AA 62-89, Middle Region
Reactivity:	Human
Host:	Rabbit
Clonality:	Polyclonal
Conjugate:	This GM-CSF antibody is un-conjugated
Application:	Western Blotting (WB), Flow Cytometry (FACS), Immunofluorescence (IF), Enzyme Immunoassay (EIA), Immunohistochemistry (Paraffin-embedded Sections) (IHC (p))

## Product Details

Immunogen:	KLH conjugated synthetic peptide between 62-89 amino acids from the Central region of human CSF2
Isotype:	Ig Fraction
Specificity:	This antibody reacts to human CSF2.
Purification:	Affinity chromatography on Protein A

## Target Details

Target:	GM-CSF (CSF2)
Alternative Name:	GM-CSF ( <a href="#">CSF2 Products</a> )

## Target Details

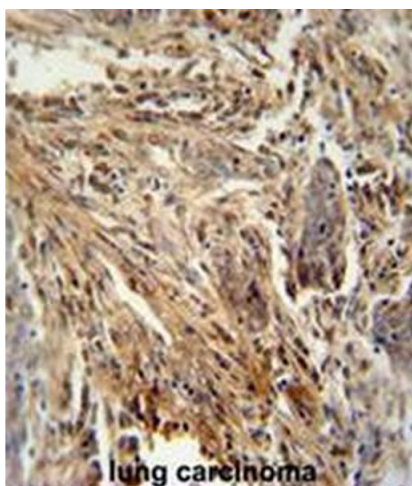
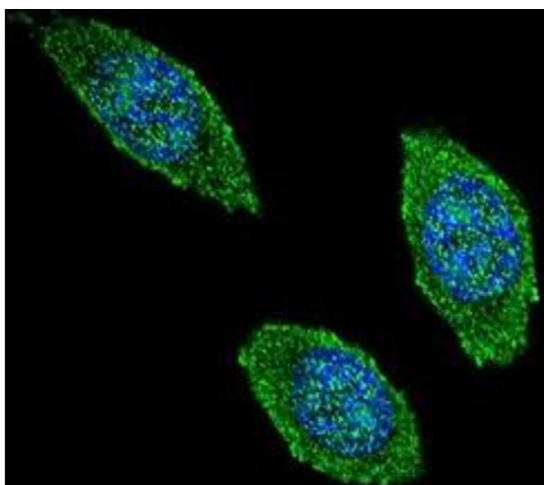
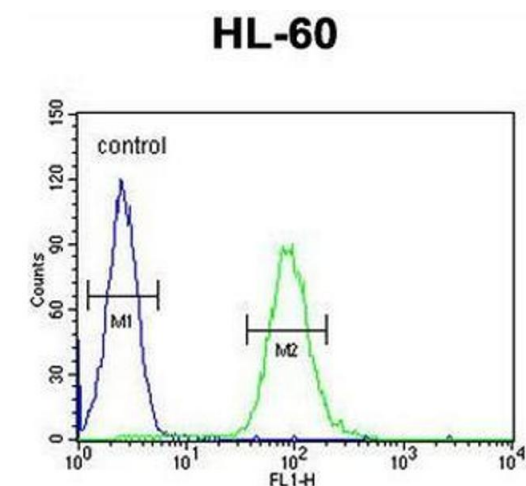
Background:	CSF2 is a cytokine that controls the production, differentiation, and function of granulocytes and macrophages. The active form of the protein is found extracellularly as a homodimer. This gene has been localized to a cluster of related genes at chromosome region 5q31, which is known to be associated with interstitial deletions in the 5q- syndrome and acute myelogenous leukemia. Other genes in the cluster include those encoding interleukins 4, 5, and 13. [provided by RefSeq].Synonyms: CSF2, Colony stimulating factor 2, GMCSF, Granulocyte-macrophage colony-stimulating factor, Molgramostin, Sargramostim
Molecular Weight:	16295 Da
Gene ID:	1437
NCBI Accession:	<a href="#">NP_000749</a>
Pathways:	<a href="#">JAK-STAT Signaling</a> , <a href="#">Cellular Response to Molecule of Bacterial Origin</a>

## Application Details

Application Notes:	Optimal working dilution should be determined by the investigator.
Restrictions:	For Research Use only

## Handling

Format:	Liquid
Concentration:	0.25 mg/mL
Buffer:	PBS, 0.09 % (W/V) Sodium Azide
Preservative:	Sodium azide
Precaution of Use:	This product contains sodium azide: a POISONOUS AND HAZARDOUS SUBSTANCE which should be handled by trained staff only.
Handling Advice:	Avoid repeated freezing and thawing.
Storage:	4 °C/-20 °C
Storage Comment:	Store undiluted at 2-8 °C for one month or (in aliquots) at -20 °C for longer.



### Flow Cytometry

**Image 1.** CSF2 Antibody (Center) flow cytometric analysis of HL-60 cells (right histogram) compared to a negative control cell (left histogram). FITC-conjugated goat-anti-rabbit secondary antibodies were used for the analysis.

### Immunofluorescence

**Image 2.** Confocal immunofluorescent analysis of CSF2 Antibody (Center) (Cat#AP51097PU-N) with 293 cell followed by Alexa Fluor 488-conjugated goat anti-rabbit IgG (green). DAPI was used to stain the cell nuclear (blue).

### Immunohistochemistry (Paraffin-embedded Sections)

**Image 3.** CSF2 antibody (Center) immunohistochemistry analysis in formalin fixed and paraffin embedded human lung carcinoma followed by peroxidase conjugation of the secondary antibody and DAB staining. This data demonstrates the use of the CSF2 antibody (Center) for immunohistochemistry. Clinical relevance has not been evaluated.

Please check the [product details page](#) for more images. Overall 4 images are available for ABIN952558.