

Datasheet for ABIN952567
anti-GNL2 antibody (N-Term)[Go to Product page](#)

2 Images

Overview

| | |
|----------------------|---|
| Quantity: | 0.4 mL |
| Target: | GNL2 |
| Binding Specificity: | AA 17-45, N-Term |
| Reactivity: | Human, Mouse |
| Host: | Rabbit |
| Clonality: | Polyclonal |
| Conjugate: | This GNL2 antibody is un-conjugated |
| Application: | Western Blotting (WB), Enzyme Immunoassay (EIA) |

Product Details

| | |
|---------------|--|
| Immunogen: | KLH conjugated synthetic peptide between 17-45 amino acids from the N-terminal region of Human GNL2 / NGP1 |
| Isotype: | Ig Fraction |
| Specificity: | This antibody recognizes Human GNL2 / NGP1 (N-term). |
| Purification: | Protein A column, followed by peptide affinity purification |

Target Details

| | |
|-------------------|--|
| Target: | GNL2 |
| Alternative Name: | GNL2 / NGP1 (GNL2 Products) |
| Background: | GNL2 is a GTPase that associates with pre-60S ribosomal subunits in the nucleolus and is |

Target Details

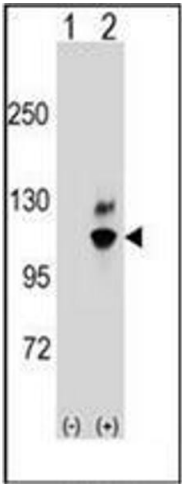
| | |
|-------------------|---|
| | required for their nuclear export and maturation (By similarity).Synonyms: Autoantigen NGP-1, Nucleolar GTP-binding protein 2 |
| Molecular Weight: | 83655 Da |
| Gene ID: | 29889 |
| NCBI Accession: | NP_037417 |

Application Details

| | |
|--------------------|--|
| Application Notes: | Optimal working dilution should be determined by the investigator. |
| Restrictions: | For Research Use only |

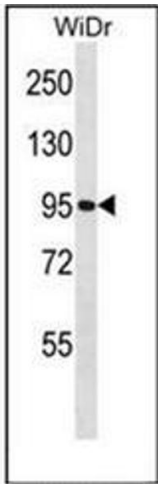
Handling

| | |
|--------------------|--|
| Format: | Liquid |
| Concentration: | 0.25 mg/mL |
| Buffer: | PBS containing 0.09 % (W/V) Sodium Azide as preservative |
| Preservative: | Sodium azide |
| Precaution of Use: | This product contains sodium azide: a POISONOUS AND HAZARDOUS SUBSTANCE which should be handled by trained staff only. |
| Handling Advice: | Avoid repeated freezing and thawing. |
| Storage: | 4 °C/-20 °C |
| Storage Comment: | Store undiluted at 2-8 °C for one month or (in aliquots) at -20 °C for longer. |



Western Blotting

Image 1. Western blot analysis of GNL2 (arrow) using GNL2 / NGP1 Antibody (N-term) Cat.-No AP51882PU-N. 293 cell lysates (2 ug/lane) either nontransfected (Lane 1) or transiently transfected (Lane 2) with the GNL2 gene.



Western Blotting

Image 2. Western blot analysis of GNL2 / NGP1 Antibody (N-term) Cat.-No AP51882PU-N in WiDr cell line lysates (35ug/lane). This demonstrates the GNL2 antibody detected the GNL2 protein (arrow).