

Datasheet for ABIN952568  
**anti-GNL3L antibody (N-Term)**[Go to Product page](#)

## 2 Images

## Overview

Quantity:	0.4 mL
Target:	GNL3L
Binding Specificity:	AA 102-130, N-Term
Reactivity:	Human
Host:	Rabbit
Clonality:	Polyclonal
Application:	Western Blotting (WB), Flow Cytometry (FACS), Enzyme Immunoassay (EIA)

## Product Details

Immunogen:	KLH conjugated synthetic peptide between 102-130 amino acids from the N-terminal region of Human GNL3L
Isotype:	Ig Fraction
Specificity:	This antibody recognizes Human GNL3L (N-term).
Purification:	Protein A column, followed by peptide affinity purification

## Target Details

Target:	GNL3L
Alternative Name:	GNL3L ( <a href="#">GNL3L Products</a> )
Background:	The protein encoded by this gene appears to be a nucleolar GTPase that is essential for ribosomal pre-rRNA processing and cell proliferation. Two transcript variants encoding the same protein have been found for this gene. Synonyms: Guanine nucleotide-binding protein-like

## Target Details

	3-like protein
Molecular Weight:	65573 Da
Gene ID:	54552
NCBI Accession:	<a href="#">NP_001171748</a>

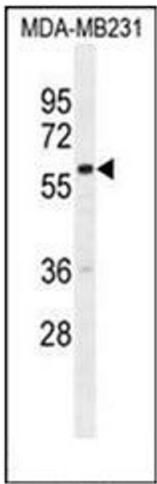
## Application Details

Application Notes:	Optimal working dilution should be determined by the investigator.
Restrictions:	For Research Use only

## Handling

Format:	Liquid
Concentration:	0.25 mg/mL
Buffer:	PBS containing 0.09 % (W/V) Sodium Azide as preservative
Preservative:	Sodium azide
Precaution of Use:	This product contains sodium azide: a POISONOUS AND HAZARDOUS SUBSTANCE which should be handled by trained staff only.
Handling Advice:	Avoid repeated freezing and thawing.
Storage:	4 °C/-20 °C
Storage Comment:	Store undiluted at 2-8 °C for one month or (in aliquots) at -20 °C for longer.

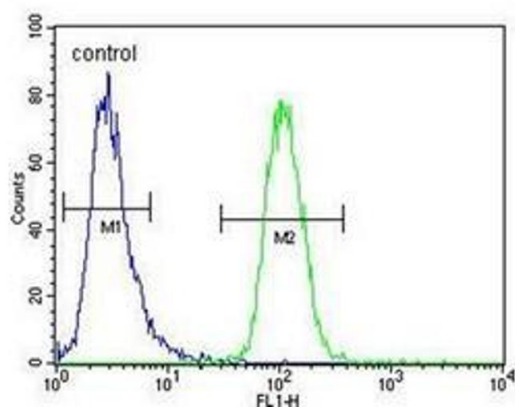
## Images



### Western Blotting

**Image 1.** Western blot analysis of GNL3L Antibody (N-term) in MDA-MB231 cell line lysates (35ug/lane). This demonstrates the GNL3L antibody detected the GNL3L protein (arrow).

## MDA-MB231



### Flow Cytometry

**Image 2.** Flow cytometric analysis of MDA-MB231 cells using GNL3L Antibody (N-term) Cat.-No AP51883PU-N (right histogram) compared to a negative control cell (left histogram). FITC-conjugated goat-anti-rabbit secondary antibodies were used for the analysis.