

Datasheet for ABIN952570
anti-GnRH2 antibody (Middle Region)[Go to Product page](#)

2 Images

Overview

Quantity:	0.4 mL
Target:	GnRH2
Binding Specificity:	AA 32-62, Middle Region
Reactivity:	Human
Host:	Rabbit
Clonality:	Polyclonal
Conjugate:	This GnRH2 antibody is un-conjugated
Application:	Western Blotting (WB), Flow Cytometry (FACS), Enzyme Immunoassay (EIA)

Product Details

Immunogen:	KLH conjugated synthetic peptide between 32~62 amino acids from the Central region of human GNRH2 / Progonadoliberin-2
Isotype:	Ig Fraction
Specificity:	This antibody recognizes Human GNRH2 / Progonadoliberin-2 (Center).
Purification:	Protein A column, followed by peptide affinity purification

Target Details

Target:	GnRH2
Alternative Name:	GNRH2 / Progonadoliberin-2 (GnRH2 Products)
Background:	The protein encoded by this gene is a preproprotein that is cleaved to form a secreted 10 aa

Target Details

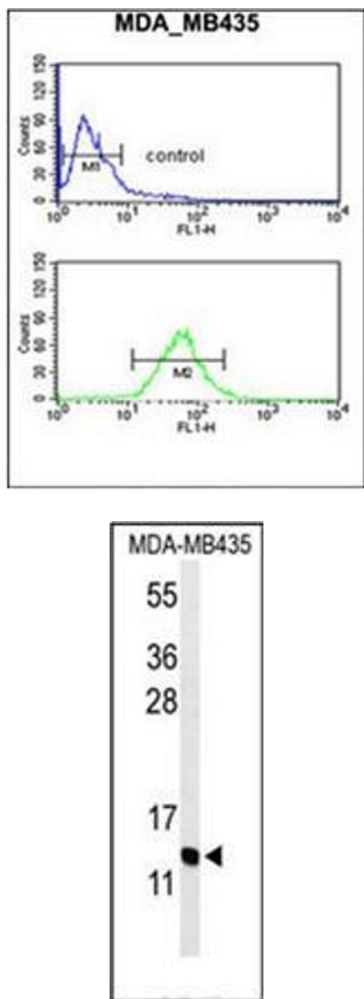
	peptide hormone. The secreted decapeptide regulates reproduction in females by stimulating the secretion of both luteinizing- and follicle-stimulating hormones.
Molecular Weight:	12918 Da
Gene ID:	2797
NCBI Accession:	NP_001492
Pathways:	Hormone Activity

Application Details

Application Notes:	Optimal working dilution should be determined by the investigator.
Restrictions:	For Research Use only

Handling

Format:	Liquid
Concentration:	0.25 mg/mL
Buffer:	PBS containing 0.09 % (W/V) Sodium Azide as preservative
Preservative:	Sodium azide
Precaution of Use:	This product contains sodium azide: a POISONOUS AND HAZARDOUS SUBSTANCE which should be handled by trained staff only.
Handling Advice:	Avoid repeated freezing and thawing.
Storage:	4 °C/-20 °C
Storage Comment:	Store undiluted at 2-8 °C for one month or (in aliquots) at -20 °C for longer.



Flow Cytometry

Image 1. Flow cytometric analysis of MDA-MB435 cells using GNRH2 Antibody (Center) Cat.-No AP51886PU-N (bottom histogram) compared to a negative control cell (top histogram). FITC-conjugated goat-anti-rabbit secondary antibodies were used for the analysis.

Western Blotting

Image 2. Western blot analysis of GNRH2 Antibody (Center) in MDA-MB435 cell line lysates (35ug/lane). GNRH2 (arrow) was detected using the purified Pab.