



Datasheet for ABIN952580  
**anti-GOT1L1 antibody (C-Term)**



[Go to Product page](#)

3 Images

Overview

Quantity:	0.4 mL
Target:	GOT1L1
Binding Specificity:	AA 353-383, C-Term
Reactivity:	Mouse, Human
Host:	Rabbit
Clonality:	Polyclonal
Conjugate:	This GOT1L1 antibody is un-conjugated
Application:	Western Blotting (WB), Immunofluorescence (IF), Enzyme Immunoassay (EIA)

Product Details

Immunogen:	KLH conjugated synthetic peptide between 353-383 amino acids from the C-terminal region of human GOT1L1
Isotype:	Ig Fraction
Specificity:	This antibody reacts to GOT1L1.
Cross-Reactivity (Details):	Species reactivity (tested):Mouse.
Purification:	Affinity chromatography on Protein A

Target Details

Target:	GOT1L1
Alternative Name:	GOT1L1 ( <a href="#">GOT1L1 Products</a> )

## Target Details

Background:	Synonyms: Putative aspartate aminotransferase, cytoplasmic 2
Molecular Weight:	47305 Da
Gene ID:	137362
NCBI Accession:	<a href="#">NP_689626</a>

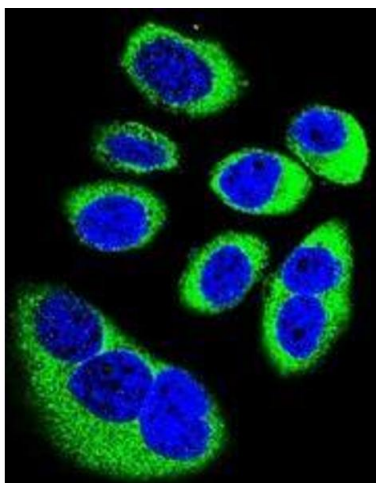
## Application Details

Application Notes:	Optimal working dilution should be determined by the investigator.
Restrictions:	For Research Use only

## Handling

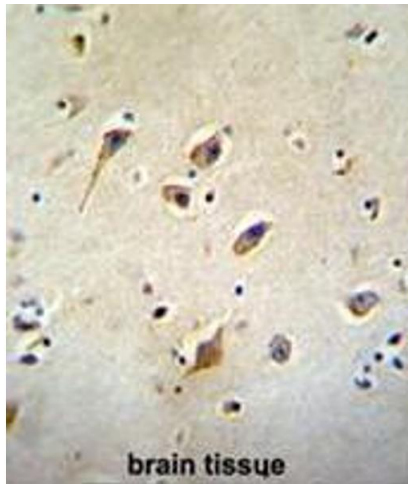
Format:	Liquid
Concentration:	0.25 mg/mL
Buffer:	PBS, 0.09 % (W/V) sodium azide
Preservative:	Sodium azide
Precaution of Use:	This product contains sodium azide: a POISONOUS AND HAZARDOUS SUBSTANCE which should be handled by trained staff only.
Handling Advice:	Avoid repeated freezing and thawing.
Storage:	4 °C/-20 °C
Storage Comment:	Store the antibody undiluted at 2-8 °C for one month or (in aliquots) at -20 °C for longer.

## Images



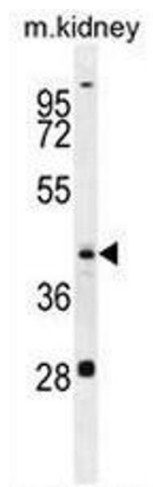
### Immunofluorescence

**Image 1.** Confocal immunofluorescent analysis of GOT1L1 Antibody (C-term)(Cat#AP51895PU-N) with U-251MG cell followed by Alexa Fluor 488-conjugated goat anti-rabbit IgG (green). DAPI was used to stain the cell nuclear (blue).



### Immunohistochemistry (Paraffin-embedded Sections)

**Image 2.** GOT1L1 Antibody (C-term) immunohistochemistry analysis in formalin fixed and paraffin embedded human brain tissue followed by peroxidase conjugation of the secondary antibody and DAB staining. This data demonstrates the use of GOT1L1 Antibody (C-term) for immunohistochemistry. Clinical relevance has not been evaluated.



### Western Blotting

**Image 3.** GOT1L1 Antibody (C-term) western blot analysis in mouse kidney tissue lysates (35µg/lane). This demonstrates the GOT1L1 antibody detected the GOT1L1 protein (arrow).