



[Go to Product page](#)

Datasheet for ABIN952587

anti-GPD1L antibody (N-Term)

4 Images

Overview

Quantity:	0.4 mL
Target:	GPD1L
Binding Specificity:	AA 47-77, N-Term
Reactivity:	Human, Mouse
Host:	Rabbit
Clonality:	Polyclonal
Conjugate:	This GPD1L antibody is un-conjugated
Application:	Western Blotting (WB), Immunohistochemistry (Paraffin-embedded Sections) (IHC (p)), Enzyme Immunoassay (EIA)

Product Details

Immunogen:	KLH conjugated synthetic peptide between 47-77 amino acids from the N-terminal region of human GPD1L
Isotype:	Ig Fraction
Specificity:	This antibody reacts to GPD1L.
Cross-Reactivity (Details):	Species reactivity (tested):Human and Mouse.
Purification:	Affinity chromatography on Protein A

Target Details

Target:	GPD1L
---------	-------

Target Details

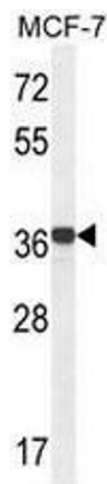
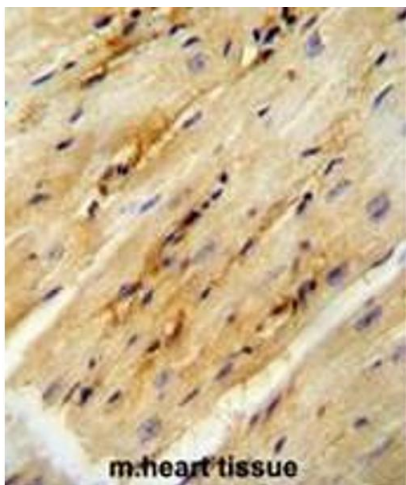
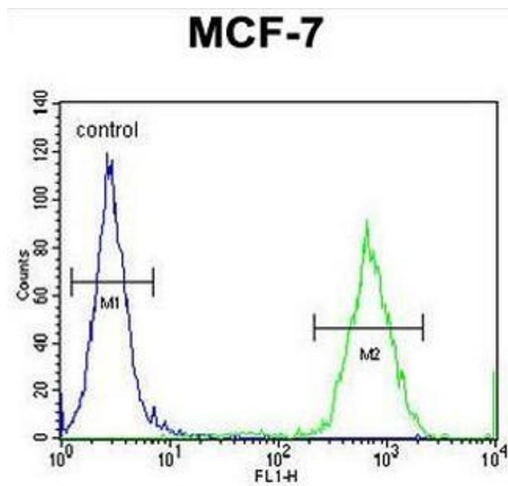
Alternative Name:	GPD1L (GPD1L Products)
Background:	The protein encoded by this gene catalyzes the conversion of sn-glycerol 3-phosphate to glycerone phosphate. The encoded protein is found in the cytoplasm, associated with the plasma membrane, where it binds the sodium channel, voltage-gated, type V, alpha subunit (SCN5A). Defects in this gene are a cause of Brugada syndrome type 2 (BRS2) as well as sudden infant death syndrome (SIDS).Synonyms: GPD1-L, Glycerol-3-phosphate dehydrogenase 1-like protein, KIAA0089
Molecular Weight:	38419 Da
Gene ID:	23171
NCBI Accession:	NP_055956

Application Details

Application Notes:	Optimal working dilution should be determined by the investigator.
Restrictions:	For Research Use only

Handling

Format:	Liquid
Concentration:	0.25 mg/mL
Buffer:	PBS, 0.09 % (W/V) sodium azide
Preservative:	Sodium azide
Precaution of Use:	This product contains sodium azide: a POISONOUS AND HAZARDOUS SUBSTANCE which should be handled by trained staff only.
Handling Advice:	Avoid repeated freezing and thawing.
Storage:	4 °C/-20 °C
Storage Comment:	Store the antibody undiluted at 2-8 °C for one month or (in aliquots) at -20 °C for longer.



Flow Cytometry

Image 1. GPD1L Antibody (N-term) flow cytometric analysis of MCF-7 cells (right histogram) compared to a negative control cell (left histogram). FITC-conjugated goat-anti-rabbit secondary antibodies were used for the analysis.

Immunohistochemistry (Paraffin-embedded Sections)

Image 2. GPD1L antibody (N-term) immunohistochemistry analysis in formalin fixed and paraffin embedded mouse heart tissue followed by peroxidase conjugation of the secondary antibody and DAB staining. This data demonstrates the use of the GPD1L antibody (N-term) for immunohistochemistry. Clinical relevance has not been evaluated.

Western Blotting

Image 3. GPD1L Antibody (N-term) western blot analysis in MCF-7 cell line lysates (35µg/lane). This demonstrates the GPD1L antibody detected the GPD1L protein (arrow).

Please check the [product details page](#) for more images. Overall 4 images are available for ABIN952587.