



[Go to Product page](#)

Datasheet for ABIN952588
anti-GPD2 antibody (C-Term)

2 Images

Overview

Quantity:	0.4 mL
Target:	GPD2
Binding Specificity:	AA 605-634, C-Term
Reactivity:	Human
Host:	Rabbit
Clonality:	Polyclonal
Conjugate:	This GPD2 antibody is un-conjugated
Application:	Western Blotting (WB), Immunohistochemistry (Paraffin-embedded Sections) (IHC (p)), Enzyme Immunoassay (EIA)

Product Details

Immunogen:	KLH conjugated synthetic peptide between 605-634 amino acids from the C-terminal region of human GPD2
Isotype:	Ig Fraction
Specificity:	This antibody reacts to GPD2.
Cross-Reactivity (Details):	Species reactivity (tested):Human.
Purification:	Affinity chromatography on Protein A

Target Details

Target:	GPD2
---------	------

Target Details

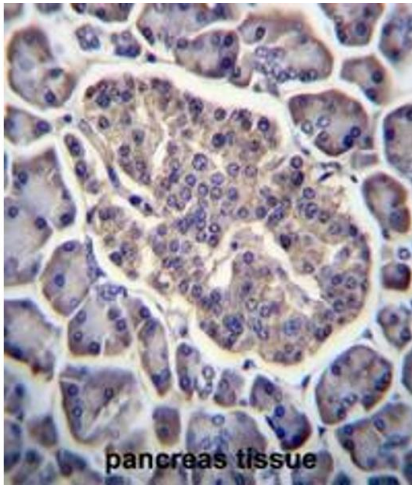
Alternative Name:	GPD2 / GPDH-M (GPD2 Products)
Background:	The protein encoded by this gene localizes to the inner mitochondrial membrane and catalyzes the conversion of glycerol-3-phosphate to dihydroxyacetone phosphate, using FAD as a cofactor. Along with GDP1, the encoded protein constitutes the glycerol phosphate shuttle, which reoxidizes NADH formed during glycolysis. Two transcript variants encoding the same protein have been found for this gene.Synonyms: GPD-M, Glycerol-3-phosphate dehydrogenase, mtGPD
Molecular Weight:	67kd Isoform 2. 80853 Da
Gene ID:	2820
NCBI Accession:	NP_000399

Application Details

Application Notes:	Optimal working dilution should be determined by the investigator.
Restrictions:	For Research Use only

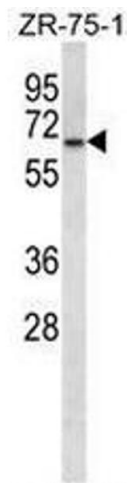
Handling

Format:	Liquid
Concentration:	0.25 mg/mL
Buffer:	PBS, 0.09 % (W/V) sodium azide
Preservative:	Sodium azide
Precaution of Use:	This product contains sodium azide: a POISONOUS AND HAZARDOUS SUBSTANCE which should be handled by trained staff only.
Handling Advice:	Avoid repeated freezing and thawing.
Storage:	4 °C/-20 °C
Storage Comment:	Store the antibody undiluted at 2-8 °C for one month or (in aliquots) at -20 °C for longer.



Immunohistochemistry (Paraffin-embedded Sections)

Image 1. GPD2 Antibody (C-term) immunohistochemistry analysis in formalin fixed and paraffin embedded human pancreas tissue followed by peroxidase conjugation of the secondary antibody and DAB staining. This data demonstrates the use of GPD2 Antibody (C-term) for immunohistochemistry. Clinical relevance has not been evaluated.



Western Blotting

Image 2. GPD2 Antibody (C-term) western blot analysis in ZR-75-1 cell line lysates (35µg/lane). This demonstrates the GPD2 antibody detected the GPD2 protein (arrow).