

Datasheet for ABIN952592  
**anti-GPM6A antibody (C-Term)**[Go to Product page](#)

## 2 Images

## Overview

Quantity:	0.4 mL
Target:	GPM6A
Binding Specificity:	AA 253-278, C-Term
Reactivity:	Human
Host:	Rabbit
Clonality:	Polyclonal
Conjugate:	This GPM6A antibody is un-conjugated
Application:	Western Blotting (WB), Immunohistochemistry (Paraffin-embedded Sections) (IHC (p)), Enzyme Immunoassay (EIA)

## Product Details

Immunogen:	KLH conjugated synthetic peptide between 253-278 amino acids from the C-terminal region of human GPM6A
Isotype:	Ig Fraction
Specificity:	This antibody reacts to GPM6A.
Cross-Reactivity (Details):	Species reactivity (tested):Human.
Purification:	Affinity chromatography on Protein A

## Target Details

Target:	GPM6A
---------	-------

### Target Details

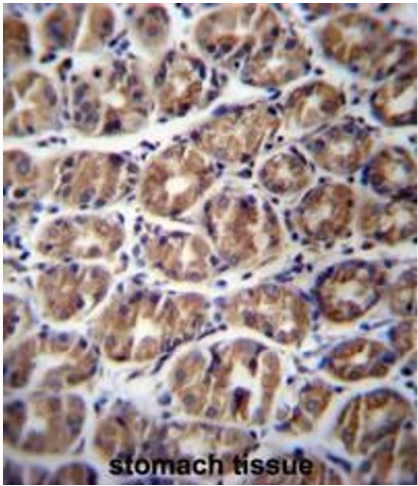
Alternative Name:	GPM6A ( <a href="#">GPM6A Products</a> )
Background:	Synonyms: Neuronal membrane glycoprotein M6-a
Molecular Weight:	31210 Da
Gene ID:	2823
NCBI Accession:	<a href="#">NP_005268</a>

### Application Details

Application Notes:	Optimal working dilution should be determined by the investigator.
Restrictions:	For Research Use only

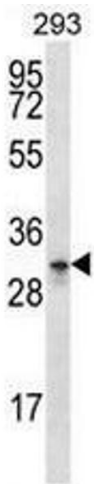
### Handling

Format:	Liquid
Concentration:	0.25 mg/mL
Buffer:	PBS, 0.09 % (W/V) sodium azide
Preservative:	Sodium azide
Precaution of Use:	This product contains sodium azide: a POISONOUS AND HAZARDOUS SUBSTANCE which should be handled by trained staff only.
Handling Advice:	Avoid repeated freezing and thawing.
Storage:	4 °C/-20 °C
Storage Comment:	Store the antibody undiluted at 2-8 °C for one month or (in aliquots) at -20 °C for longer.



**Immunohistochemistry (Paraffin-embedded Sections)**

**Image 1.** GPM6A Antibody (C-term) immunohistochemistry analysis in formalin fixed and paraffin embedded human stomach tissue followed by peroxidase conjugation of the secondary antibody and DAB staining. This data demonstrates the use of GPM6A Antibody (C-term) for immunohistochemistry. Clinical relevance has not been evaluated.



**Western Blotting**

**Image 2.** GPM6A Antibody (C-term) western blot analysis in 293 cell line lysates (35µg/lane). This demonstrates the GPM6A antibody detected the GPM6A protein (arrow).