

Datasheet for ABIN952594
anti-GPM6B antibody (N-Term)[Go to Product page](#)

2 Images

Overview

Quantity:	0.4 mL
Target:	GPM6B
Binding Specificity:	AA 1-30, N-Term
Reactivity:	Human
Host:	Rabbit
Clonality:	Polyclonal
Conjugate:	This GPM6B antibody is un-conjugated
Application:	Western Blotting (WB), Enzyme Immunoassay (EIA)

Product Details

Immunogen:	KLH conjugated synthetic peptide between 1-30 amino acids from the N-terminal region of human GPM6B
Isotype:	Ig Fraction
Specificity:	This antibody reacts to GPM6B.
Cross-Reactivity (Details):	Species reactivity (tested):Human.
Purification:	Affinity Purified

Target Details

Target:	GPM6B
Alternative Name:	GPM6B (GPM6B Products)

Target Details

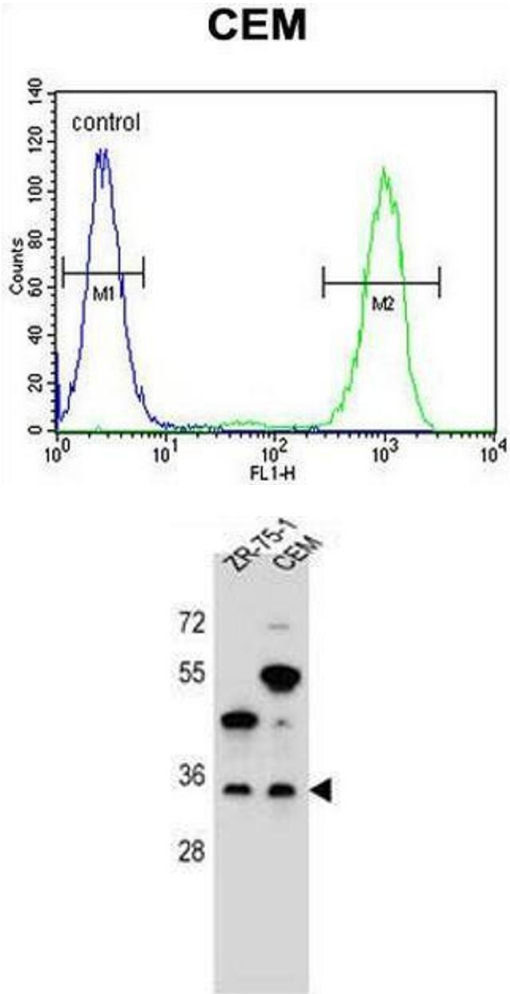
Background:	This gene encodes a membrane glycoprotein that belongs to the proteolipid protein family. Proteolipid protein family members are expressed in most brain regions and are thought to be involved in cellular housekeeping functions, such as membrane trafficking and cell-to-cell communication.Synonyms: Neuronal membrane glycoprotein M6-b
Molecular Weight:	28989 Da
Gene ID:	2824
NCBI Accession:	NP_001001994

Application Details

Application Notes:	Optimal working dilution should be determined by the investigator.
Restrictions:	For Research Use only

Handling

Format:	Liquid
Concentration:	0.25 mg/mL
Buffer:	PBS, 0.09 % (W/V) sodium azide
Preservative:	Sodium azide
Precaution of Use:	This product contains sodium azide: a POISONOUS AND HAZARDOUS SUBSTANCE which should be handled by trained staff only.
Handling Advice:	Avoid repeated freezing and thawing.
Storage:	4 °C/-20 °C
Storage Comment:	Store the antibody undiluted at 2-8 °C for one month or (in aliquots) at -20 °C for longer.



Flow Cytometry

Image 1. GPM6B Antibody (N-term) flow cytometric analysis of CEM cells (right histogram) compared to a negative control cell (left histogram).FITC-conjugated goat-anti-rabbit secondary antibodies were used for the analysis.

Western Blotting

Image 2. GPM6B Antibody (N-term) western blot analysis in ZR-75-1,CEM cell line lysates (35µg/lane).This demonstrates the GPM6B antibody detected the GPM6B protein (arrow).