



[Go to Product page](#)

Datasheet for ABIN952608

## anti-GPR180 antibody (Middle Region)

### 2 Images

#### Overview

Quantity:	0.4 mL
Target:	GPR180
Binding Specificity:	AA 126-155, Middle Region
Reactivity:	Human
Host:	Rabbit
Clonality:	Polyclonal
Conjugate:	This GPR180 antibody is un-conjugated
Application:	Western Blotting (WB), Immunohistochemistry (Paraffin-embedded Sections) (IHC (p)), Enzyme Immunoassay (EIA)

#### Product Details

Immunogen:	Synthetic peptide - KLH conjugated - corresponding to the central region (between 126-155aa) of human GPR180/ITR.
Isotype:	Ig Fraction
Specificity:	This antibody detects human GPR180/ITR.
Purification:	Purified through a protein A column; followed by peptide affinity purification.

#### Target Details

Target:	GPR180
Alternative Name:	GPR180 / ITR ( <a href="#">GPR180 Products</a> )

## Target Details

---

Background:	The GPR180 gene encodes a protein that is a member of the G protein-coupled receptor superfamily. This protein is produced predominantly in vascular smooth muscle cells and may play an important role in the regulation of vascular remodeling.Synonyms: Integral membrane protein GPR180, Intimal thickness-related receptor
Molecular Weight:	49395 Da
Gene ID:	160897
NCBI Accession:	<a href="#">NP_851320</a>

## Application Details

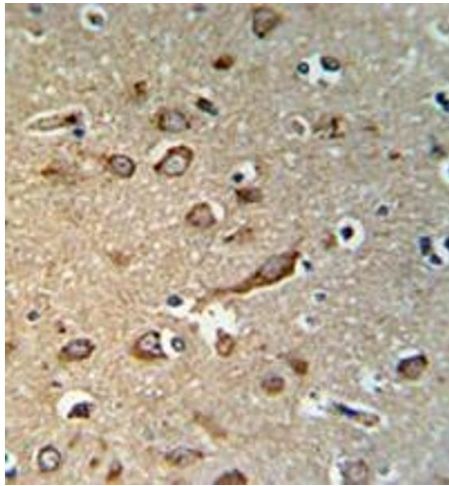
---

Application Notes:	Optimal working dilution should be determined by the investigator.
Restrictions:	For Research Use only

## Handling

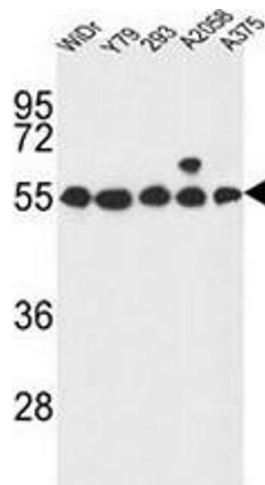
---

Format:	Liquid
Concentration:	0.25 mg/mL
Buffer:	PBS with 0.09 % (W/V) Sodium Azide.
Preservative:	Sodium azide
Precaution of Use:	This product contains sodium azide: a POISONOUS AND HAZARDOUS SUBSTANCE which should be handled by trained staff only.
Handling Advice:	Avoid repeated freezing and thawing.
Storage:	4 °C/-20 °C
Storage Comment:	Store the antibody undiluted at 2-8 °C for one month or (in aliquots) at -20 °C for longer.



### Immunohistochemistry (Paraffin-embedded Sections)

**Image 1.** Immunohistochemistry analysis in human brain tissue (formalin-fixed, paraffin-embedded) using GPR180/ITR Antibody, followed by peroxidase conjugation of the secondary antibody and DAB staining. This data demonstrates the use of the GPR180 antibody for IHC. Clinical relevance has not been evaluated.



### Western Blotting

**Image 2.** Western blot analysis in WiDr, Y79, 293, A2058, A375 cell line lysates (35ug/lane) using GPR180/ITR Antibody. This demonstrates the GPR180 antibody detected the GPR180 protein (arrow).