

Datasheet for ABIN952609  
**anti-GPR34 antibody (Middle Region)**[Go to Product page](#)

## 2 Images

## Overview

Quantity:	0.4 mL
Target:	GPR34
Binding Specificity:	AA 239-269, Middle Region
Reactivity:	Human
Host:	Rabbit
Clonality:	Polyclonal
Conjugate:	This GPR34 antibody is un-conjugated
Application:	Western Blotting (WB), Immunohistochemistry (Paraffin-embedded Sections) (IHC (p)), Enzyme Immunoassay (EIA)

## Product Details

Immunogen:	Synthetic peptide - KLH conjugated - corresponding to the central region (between 239-269aa) of human GPR34.
Isotype:	Ig Fraction
Specificity:	This antibody detects human GPR34.
Cross-Reactivity (Details):	Species reactivity (tested):Human
Purification:	Purified through a protein A column; followed by peptide affinity purification.

## Target Details

Target:	GPR34
---------	-------

### Target Details

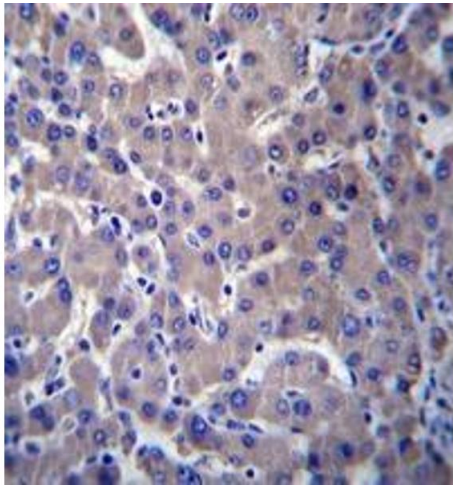
Alternative Name:	GPR34 ( <a href="#">GPR34 Products</a> )
Background:	G protein-coupled receptors (GPCRs), such as GPR34, are integral membrane proteins containing 7 putative transmembrane domains (TMs). These proteins mediate signals to the interior of the cell via activation of heterotrimeric G proteins that in turn activate various effector proteins, ultimately resulting in a physiologic response.Synonyms: G-protein coupled receptor 34
Gene ID:	2857
NCBI Accession:	<a href="#">NP_001091048</a>

### Application Details

Application Notes:	Optimal working dilution should be determined by the investigator.
Restrictions:	For Research Use only

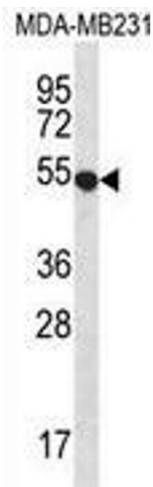
### Handling

Format:	Liquid
Concentration:	0.25 mg/mL
Buffer:	PBS with 0.09 % (W/V) Sodium Azide.
Preservative:	Sodium azide
Precaution of Use:	This product contains sodium azide: a POISONOUS AND HAZARDOUS SUBSTANCE which should be handled by trained staff only.
Handling Advice:	Avoid repeated freezing and thawing.
Storage:	4 °C/-20 °C
Storage Comment:	Store the antibody undiluted at 2-8 °C for one month or (in aliquots) at -20 °C for longer.



**Immunohistochemistry (Paraffin-embedded Sections)**

**Image 1.** Immunohistochemistry analysis in human liver tissue (formalin-fixed, paraffin-embedded) using GPR34 Antibody , followed by peroxidase conjugation of the secondary antibody and DAB staining. This data demonstrates the use of GPR34 antibody for IHC. Clinical relevance has not been evaluated.



**Western Blotting**

**Image 2.** Western blot analysis in MDA-MB231 cell line lysates (35ug/lane) using GPR34 Antibody . This demonstrates the GPR34 antibody detected the GPR34 protein (arrow).