

Datasheet for ABIN952612  
**anti-GPR50 antibody (Middle Region)**[Go to Product page](#)

## 2 Images

## Overview

Quantity:	0.4 mL
Target:	GPR50
Binding Specificity:	AA 323-352, Middle Region
Reactivity:	Human
Host:	Rabbit
Clonality:	Polyclonal
Conjugate:	This GPR50 antibody is un-conjugated
Application:	Western Blotting (WB), Flow Cytometry (FACS), Enzyme Immunoassay (EIA)

## Product Details

Immunogen:	Synthetic peptide - KLH conjugated - corresponding to the center region (between 323-352aa) of human GPR50.
Isotype:	Ig Fraction
Specificity:	This antibody recognizes GPR50.
Cross-Reactivity (Details):	Species reactivity (tested):Human
Purification:	Purified through a Protein A column followed by peptide affinity purification

## Target Details

Target:	GPR50
Alternative Name:	GPR50 ( <a href="#">GPR50 Products</a> )

## Target Details

Background: Melatonin-related receptor expression has been documented from human CNS tissues, specifically in hypothalamus and pituitary, but not in human peripheral tissues. In animals, expression has also been seen in the CNS, and peripheral tissues. Synonyms: G protein-coupled receptor 50, H9, Melatonin-related receptor

Gene ID: 9248

NCBI Accession: [NP\\_004215](#)

## Application Details

Application Notes: Optimal working dilution should be determined by the investigator.

Restrictions: For Research Use only

## Handling

Format: Liquid

Concentration: 0.25 mg/mL

Buffer: PBS with 0.09 % (W/V) Sodium azide

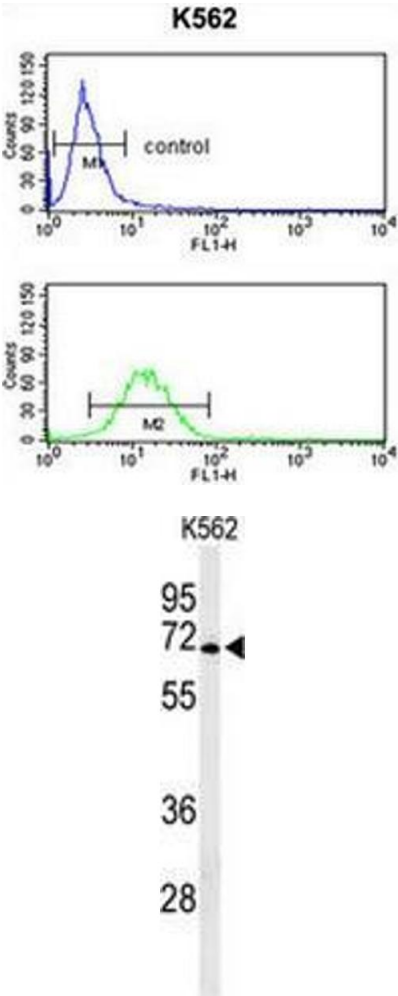
Preservative: Sodium azide

Precaution of Use: This product contains sodium azide: a POISONOUS AND HAZARDOUS SUBSTANCE which should be handled by trained staff only.

Handling Advice: Avoid repeated freezing and thawing.

Storage: 4 °C/-20 °C

Storage Comment: Store undiluted at 2-8 °C for one month or (in aliquots) at -20 °C for longer.



Flow Cytometry

**Image 1.** Flow cytometry analysis of K562 cells (bottom histogram) compared to a negative control cell (top histogram) using GPR50 Antibody , followed by FITC-conjugated goat-anti-rabbit secondary antibodies.

Western Blotting

**Image 2.** Western blot analysis of GPR50 (arrow) in K562 cell line lysates (35ug/lane) using GPR50