

Datasheet for ABIN952624

## anti-GRAP2 antibody (Middle Region)



[Go to Product page](#)

### 1 Image

#### Overview

Quantity:	0.4 mL
Target:	GRAP2
Binding Specificity:	AA 130-159, Middle Region
Reactivity:	Human
Host:	Rabbit
Clonality:	Polyclonal
Conjugate:	This GRAP2 antibody is un-conjugated
Application:	Western Blotting (WB), Enzyme Immunoassay (EIA)

#### Product Details

Immunogen:	KLH conjugated synthetic peptide between 130-159 amino acids from the Central region of Human GRAP2
Isotype:	Ig Fraction
Specificity:	This antibody recognizes Human GRAP2 (Center).
Purification:	Protein A column, followed by peptide affinity purification

#### Target Details

Target:	GRAP2
Alternative Name:	GRAP2 ( <a href="#">GRAP2 Products</a> )
Background:	This gene encodes a member of the GRB2/Sem5/Drk family. This member is an adaptor-like

## Target Details

protein involved in leukocyte-specific protein-tyrosine kinase signaling. Like its related family member, GRB2-related adaptor protein (GRAP), this protein contains an SH2 domain flanked by two SH3 domains. This protein interacts with other proteins, such as GRB2-associated binding protein 1 (GAB1) and the SLP-76 leukocyte protein (LCP2), through its SH3 domains. Transcript variants utilizing alternative polyA sites exist. Synonyms: Adapter protein GRID, GADS, GRB-2-like protein, GRB2-related adapter protein 2, GRB2L, GRBLG, GRBX, GRID, Grf-40, Grf40 adapter protein, Growth factor receptor-binding protein, Hematopoietic cell-associated adapter protein GrpL, SH3-SH2-SH3 adapter Mona

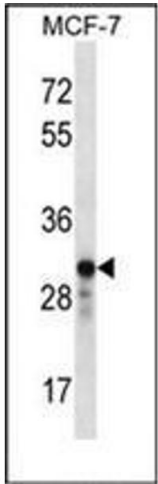
Molecular Weight:	37909 Da
Gene ID:	9402
NCBI Accession:	<a href="#">NP_004801</a>
Pathways:	<a href="#">TCR Signaling</a> , <a href="#">Fc-epsilon Receptor Signaling Pathway</a>

## Application Details

Application Notes:	Optimal working dilution should be determined by the investigator.
Restrictions:	For Research Use only

## Handling

Format:	Liquid
Concentration:	0.25 mg/mL
Buffer:	PBS containing 0.09 % (W/V) Sodium Azide as preservative
Preservative:	Sodium azide
Precaution of Use:	This product contains sodium azide: a POISONOUS AND HAZARDOUS SUBSTANCE which should be handled by trained staff only.
Handling Advice:	Avoid repeated freezing and thawing.
Storage:	4 °C/-20 °C
Storage Comment:	Store undiluted at 2-8 °C for one month or (in aliquots) at -20 °C for longer.



Western Blotting

**Image 1.** Western blot analysis of GRAP2 Antibody (Center) in MCF-7 cell line lysates (35ug/lane). This demonstrates the GRAP2 antibody detected the GRAP2 protein (arrow).