

Datasheet for ABIN952629

**anti-GRHL1 antibody (Middle Region)**[Go to Product page](#)**1** Image

## Overview

Quantity:	0.4 mL
Target:	GRHL1
Binding Specificity:	AA 293-322, Middle Region
Reactivity:	Human
Host:	Rabbit
Clonality:	Polyclonal
Conjugate:	This GRHL1 antibody is un-conjugated
Application:	Western Blotting (WB), Enzyme Immunoassay (EIA)

## Product Details

Immunogen:	KLH conjugated synthetic peptide between 293-322 amino acids from the Central region of Human GRHL1 / LBP32.
Isotype:	Ig Fraction
Specificity:	This antibody recognizes Human GRHL1 / LBP32 (Center).
Purification:	Protein A column, followed by peptide affinity purification

## Target Details

Target:	GRHL1
Alternative Name:	GRHL1 / LBP32 ( <a href="#">GRHL1 Products</a> )
Background:	GRHL1 is a transcription factor. Isoform 1 may function as an activator and isoform 2 as a

## Target Details

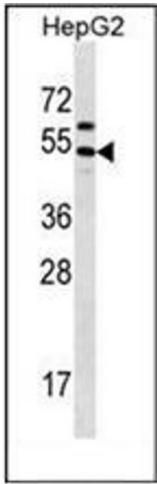
	repressor in tissues where both forms are expressed. May play a role in development. May be involved in epidermal differentiation (By similarity). Binds and transactivates the EN1 promoter.Synonyms: Grainyhead-like protein 1 homolog, MGR, Mammalian grainyhead, NH32, TFCP2L2, Transcription factor CP2-like 2, Transcription factor LBP-32
Molecular Weight:	49kd
Gene ID:	29841
NCBI Accession:	<a href="#">NP_937825</a>
Pathways:	<a href="#">Regulation of Lipid Metabolism by PPARalpha</a>

## Application Details

Application Notes:	Optimal working dilution should be determined by the investigator.
Restrictions:	For Research Use only

## Handling

Format:	Liquid
Concentration:	0.25 mg/mL
Buffer:	PBS containing 0.09 % (W/V) Sodium Azide as preservative
Preservative:	Sodium azide
Precaution of Use:	This product contains sodium azide: a POISONOUS AND HAZARDOUS SUBSTANCE which should be handled by trained staff only.
Handling Advice:	Avoid repeated freezing and thawing.
Storage:	4 °C/-20 °C
Storage Comment:	Store undiluted at 2-8 °C for one month or (in aliquots) at -20 °C for longer.



Western Blotting

**Image 1.** Western blot analysis of GRHL1 Antibody (Center) in HepG2 cell line lysates (35ug/lane). This demonstrates the GRHL1 antibody detected the GRHL1 protein (arrow).