

Datasheet for ABIN952630

anti-GRHL3 antibody (N-Term)[Go to Product page](#)**1** Image

Overview

Quantity:	0.4 mL
Target:	GRHL3
Binding Specificity:	AA 1-30, N-Term
Reactivity:	Human
Host:	Rabbit
Clonality:	Polyclonal
Conjugate:	This GRHL3 antibody is un-conjugated
Application:	Western Blotting (WB), Enzyme Immunoassay (EIA)

Product Details

Immunogen:	KLH conjugated synthetic peptide between 1-30 amino acids from the N-terminal region of human GRHL3 / SOM
Isotype:	Ig Fraction
Specificity:	This antibody recognizes Human GRHL3 / SOM (N-term).
Purification:	Protein A column, followed by peptide affinity purification

Target Details

Target:	GRHL3
Alternative Name:	GRHL3 / SOM (GRHL3 Products)
Background:	This gene encodes a member of the grainyhead family of transcription factors. The encoded

Target Details

protein may function as a transcription factor during development, and has been shown to stimulate migration of endothelial cells. Multiple transcript variants encoding distinct isoforms have been identified for this gene.Synonyms: Grainyhead-like protein 3 homolog, Sister of mammalian grainyhead, TFCP2L4, Transcription factor CP2-like 4

Molecular Weight: 70345 Da

Gene ID: 57822

NCBI Accession: [NP_001181939](#)

Application Details

Application Notes: Optimal working dilution should be determined by the investigator.

Restrictions: For Research Use only

Handling

Format: Liquid

Concentration: 0.25 mg/mL

Buffer: PBS containing 0.09 % (W/V) Sodium Azide as preservative

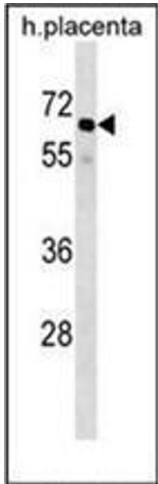
Preservative: Sodium azide

Precaution of Use: This product contains sodium azide: a POISONOUS AND HAZARDOUS SUBSTANCE which should be handled by trained staff only.

Handling Advice: Avoid repeated freezing and thawing.

Storage: 4 °C/-20 °C

Storage Comment: Store undiluted at 2-8 °C for one month or (in aliquots) at -20 °C for longer.



Western Blotting

Image 1. Western blot analysis of GRHL3 / SOM Antibody (N-term) in human placenta tissue lysates (35ug/lane). This demonstrates the GRHL3 antibody detected the GRHL3 protein (arrow).