

Datasheet for ABIN952637

anti-GRXCR1 antibody (Middle Region)[Go to Product page](#)**1** Image

Overview

Quantity:	0.4 mL
Target:	GRXCR1
Binding Specificity:	AA 90-120, Middle Region
Reactivity:	Mouse, Human
Host:	Rabbit
Clonality:	Polyclonal
Conjugate:	This GRXCR1 antibody is un-conjugated
Application:	Western Blotting (WB), Enzyme Immunoassay (EIA)

Product Details

Immunogen:	KLH conjugated synthetic peptide between 90-120 amino acids from the Central region of Human GRXCR1
Isotype:	Ig Fraction
Specificity:	This antibody recognizes Human and Mouse GRXCR1 (Center).
Purification:	Protein A column, followed by peptide affinity purification

Target Details

Target:	GRXCR1
Alternative Name:	GRXCR1 (GRXCR1 Products)
Background:	This gene is one of 60 loci associated with autosomal-recessive nonsyndromic hearing

Target Details

impairment. This gene encodes a protein which contains GRX-like domains, these domains play a role in the S-glutathionylation of proteins and may be involved in actin organization in hair cells. Synonyms: DFNB25, Glutaredoxin domain-containing cysteine-rich protein 1

Molecular Weight: 32294 Da

Gene ID: 389207

NCBI Accession: [NP_001073945](#)

Pathways: [Sensory Perception of Sound](#), [Cell Redox Homeostasis](#)

Application Details

Application Notes: Optimal working dilution should be determined by the investigator.

Restrictions: For Research Use only

Handling

Format: Liquid

Concentration: 0.25 mg/mL

Buffer: PBS containing 0.09 % (W/V) Sodium Azide as preservative

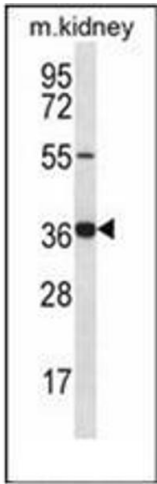
Preservative: Sodium azide

Precaution of Use: This product contains sodium azide: a POISONOUS AND HAZARDOUS SUBSTANCE which should be handled by trained staff only.

Handling Advice: Avoid repeated freezing and thawing.

Storage: 4 °C/-20 °C

Storage Comment: Store undiluted at 2-8 °C for one month or (in aliquots) at -20 °C for longer.



Western Blotting

Image 1. Western blot analysis of GRXCR1 Antibody (Center) in mouse kidney tissue lysates (35ug/lane). This demonstrates the GRXCR1 antibody detected the GRXCR1 protein (arrow).