

Datasheet for ABIN952639
anti-GSPT2 antibody (Middle Region)[Go to Product page](#)

1 Image

Overview

Quantity:	0.4 mL
Target:	GSPT2
Binding Specificity:	AA 223-253, Middle Region
Reactivity:	Human, Mouse
Host:	Rabbit
Clonality:	Polyclonal
Conjugate:	This GSPT2 antibody is un-conjugated
Application:	Western Blotting (WB), Enzyme Immunoassay (EIA)

Product Details

Immunogen:	KLH conjugated synthetic peptide between 223~253 amino acids from the Central region of Human GSPT2 / ERF3B
Isotype:	Ig Fraction
Specificity:	This antibody recognizes Human and Mouse GSPT2 / ERF3B (Center).
Purification:	Affinity Chromatography on Protein A

Target Details

Target:	GSPT2
Alternative Name:	GSPT2 / ERF3B (GSPT2 Products)
Background:	ERF3B encodes a GTPase that belongs to the GTP-binding elongation factor family. The

Target Details

encoded protein is a polypeptide release factor that complexes with eukaryotic peptide chain release factor 1 to mediate translation termination. This protein may also be involved in mRNA stability. Synonyms: Eukaryotic peptide chain release factor GTP-binding subunit ERF3B, Eukaryotic peptide chain release factor subunit 3b, G1 to S phase transition protein 2 homolog

Molecular Weight: 68883 Da

Gene ID: 23708

NCBI Accession: [NP_060564](#)

Application Details

Application Notes: Optimal working dilution should be determined by the investigator.

Restrictions: For Research Use only

Handling

Format: Liquid

Concentration: 0.25 mg/mL

Buffer: PBS containing 0.09 % (W/V) Sodium Azide as preservative

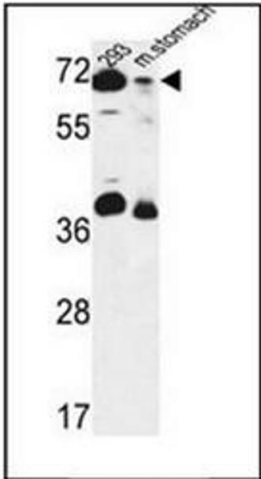
Preservative: Sodium azide

Precaution of Use: This product contains sodium azide: a POISONOUS AND HAZARDOUS SUBSTANCE which should be handled by trained staff only.

Handling Advice: Avoid repeated freezing and thawing.

Storage: 4 °C/-20 °C

Storage Comment: Store undiluted at 2-8 °C for one month or (in aliquots) at -20 °C for longer.



Western Blotting

Image 1. Western blot analysis of GSPT2 / ERF3B Antibody in 293 cell line and mouse stomach tissue lysates (35ug/lane). This demonstrates the ERF3B antibody detected the ERF3B protein (arrow).