

Datasheet for ABIN952647
anti-GTF2H2C antibody (C-Term)

3 Images

[Go to Product page](#)

Overview

Quantity:	0.4 mL
Target:	GTF2H2C
Binding Specificity:	AA 321-351, C-Term
Reactivity:	Human
Host:	Rabbit
Clonality:	Polyclonal
Conjugate:	This GTF2H2C antibody is un-conjugated
Application:	Western Blotting (WB), Immunofluorescence (IF), Immunohistochemistry (Paraffin-embedded Sections) (IHC (p)), Enzyme Immunoassay (EIA)

Product Details

Immunogen:	KLH conjugated synthetic peptide between 321-351 amino acids from the C-terminal region of human GTF2H2C
Isotype:	Ig Fraction
Specificity:	This antibody recognizes Human GTF2H2C (C-term).
Purification:	Protein A column, followed by peptide affinity purification

Target Details

Target:	GTF2H2C
Alternative Name:	GTF2H2C (GTF2H2C Products)

Target Details

Background:	Component of the core-TFIID basal transcription factor involved in nucleotide excision repair (NER) of DNA and, when complexed to CAK, in RNA transcription by RNA polymerase II (By similarity).Synonyms: GTF2H2D, General transcription factor IID polypeptide 2-like protein, General transcription factor IID subunit 2-like protein
-------------	--

Molecular Weight:	44452 Da
-------------------	----------

Gene ID:	728340
----------	--------

NCBI Accession:	NP_001035955
-----------------	------------------------------

Application Details

Application Notes:	Optimal working dilution should be determined by the investigator.
--------------------	--

Restrictions:	For Research Use only
---------------	-----------------------

Handling

Format:	Liquid
---------	--------

Concentration:	0.25 mg/mL
----------------	------------

Buffer:	PBS containing 0.09 % (W/V) Sodium Azide as preservative
---------	--

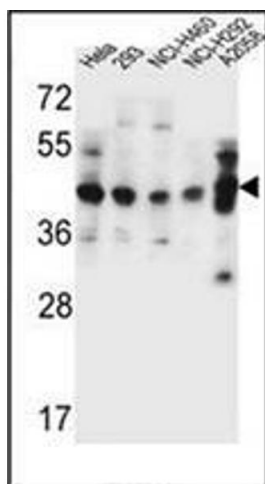
Preservative:	Sodium azide
---------------	--------------

Precaution of Use:	This product contains sodium azide: a POISONOUS AND HAZARDOUS SUBSTANCE which should be handled by trained staff only.
--------------------	--

Handling Advice:	Avoid repeated freezing and thawing.
------------------	--------------------------------------

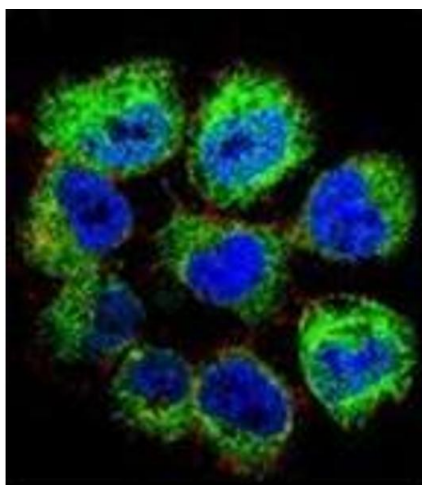
Storage:	4 °C/-20 °C
----------	-------------

Storage Comment:	Store undiluted at 2-8 °C for one month or (in aliquots) at -20 °C for longer.
------------------	--



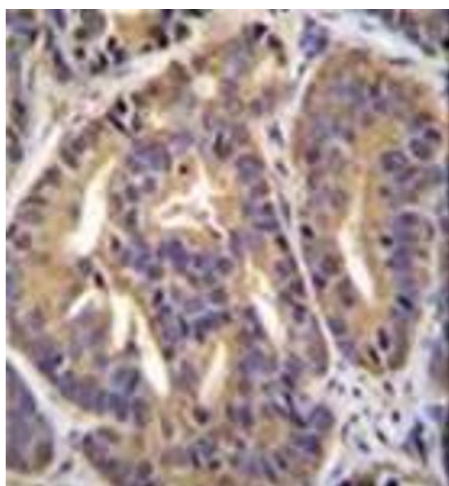
Western Blotting

Image 1. Western blot analysis of GTF2H2C Antibody (C-term) in Hela, 293, NCI-H460, NCI-H292, A2058 cell line lysates (35ug/lane). This demonstrates the GTF2H2C antibody detected the GTF2H2C protein (arrow).



Immunofluorescence

Image 2. Confocal immunofluorescent analysis of GTF2H2C Antibody (C-term) Cat.-No AP51972PU-N with NCI-H460 cell followed by Alexa Fluor 488-conjugated goat anti-rabbit IgG (green). Actin filaments have been labeled with Alexa Fluor 555 phalloidin (red). DAPI was used to stain the cell nuclear (blue).



Immunohistochemistry (Paraffin-embedded Sections)

Image 3. Immunohistochemistry analysis in formalin fixed and paraffin embedded human prostate carcinoma reacted with GTF2H2C Antibody (C-term) followed by peroxidase conjugation of the secondary antibody and DAB staining.