

Datasheet for ABIN952655  
**anti-GTPBP10 antibody (C-Term)**

## 2 Images

[Go to Product page](#)

## Overview

Quantity:	0.4 mL
Target:	GTPBP10
Binding Specificity:	AA 250-279, C-Term
Reactivity:	Human, Mouse
Host:	Rabbit
Clonality:	Polyclonal
Conjugate:	This GTPBP10 antibody is un-conjugated
Application:	Western Blotting (WB), Enzyme Immunoassay (EIA)

## Product Details

Immunogen:	KLH conjugated synthetic peptide between 250-279 amino acids from the C-terminal region of human GTPBP10
Isotype:	Ig Fraction
Specificity:	This antibody recognizes Human and Mouse GTPBP10 (C-term).
Purification:	Protein A column, followed by peptide affinity purification

## Target Details

Target:	GTPBP10
Alternative Name:	GTPBP10 ( <a href="#">GTPBP10 Products</a> )
Background:	Small G proteins, such as GTPBP10, act as molecular switches that play crucial roles in the

## Target Details

regulation of fundamental cellular processes such as protein synthesis, nuclear transport, membrane trafficking, and signal transduction (Hirano et al., 2006 [PubMed 17054726]).Synonyms: GTP-binding protein 10, OBGH2, Protein obg homolog 2, UG0751c10

Molecular Weight: 42933 Da

Gene ID: 85865

NCBI Accession: [NP\\_001036182](#)

## Application Details

Application Notes: Optimal working dilution should be determined by the investigator.

Restrictions: For Research Use only

## Handling

Format: Liquid

Concentration: 0.25 mg/mL

Buffer: PBS containing 0.09 % (W/V) Sodium Azide as preservative

Preservative: Sodium azide

Precaution of Use: This product contains sodium azide: a POISONOUS AND HAZARDOUS SUBSTANCE which should be handled by trained staff only.

Handling Advice: Avoid repeated freezing and thawing.

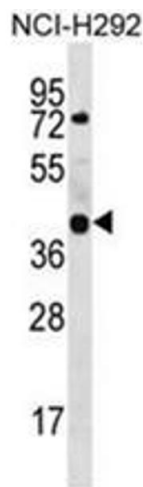
Storage: 4 °C/-20 °C

Storage Comment: Store undiluted at 2-8 °C for one month or (in aliquots) at -20 °C for longer.



#### Western Blotting

**Image 1.** Western blot analysis of GTPBP10 Antibody (C-term) in mouse kidney tissue lysates (35ug/lane). This demonstrates the GTPBP10 antibody detected the GTPBP10 protein (arrow).



#### Western Blotting

**Image 2.** Western blot analysis of GTPBP10 Antibody (C-term) Cat.-No AP51977PU-N in NCI-H292 cell line lysates (35ug/lane). This demonstrates the GTPBP10 antibody detected the GTPBP10 protein (arrow).