

Datasheet for ABIN952656  
**anti-GTPBP2 antibody (C-Term)**

## 3 Images

[Go to Product page](#)

## Overview

Quantity:	0.4 mL
Target:	GTPBP2
Binding Specificity:	AA 543-572, C-Term
Reactivity:	Human, Mouse, Hamster
Host:	Rabbit
Clonality:	Polyclonal
Conjugate:	This GTPBP2 antibody is un-conjugated
Application:	Western Blotting (WB), Immunohistochemistry (Paraffin-embedded Sections) (IHC (p)), Enzyme Immunoassay (EIA)

## Product Details

Immunogen:	KLH conjugated synthetic peptide between 543-572 amino acids from the C-terminal region of human GTPBP2
Isotype:	Ig Fraction
Specificity:	This antibody recognizes Human, Mouse and Hamster GTPBP2 (C-term).
Purification:	Protein A column, followed by peptide affinity purification

## Target Details

Target:	GTPBP2
Alternative Name:	GTPBP2 ( <a href="#">GTPBP2 Products</a> )

## Target Details

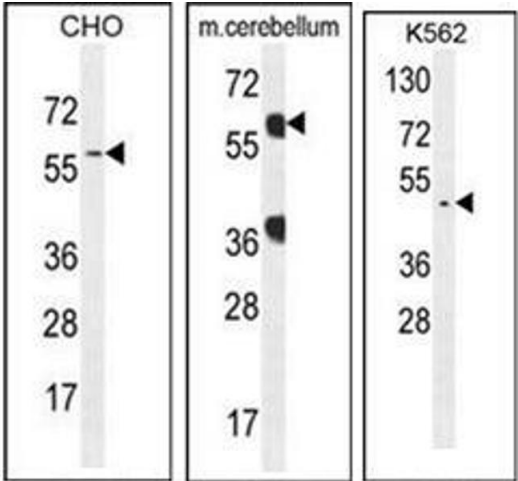
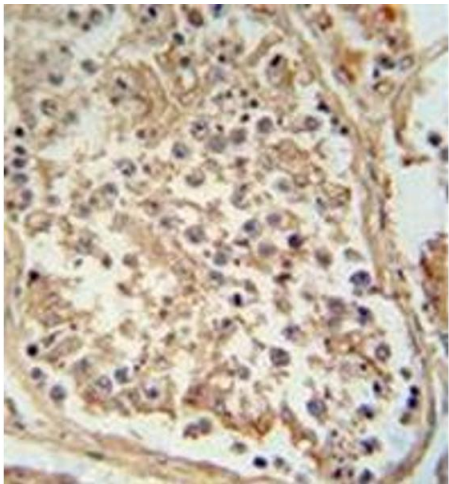
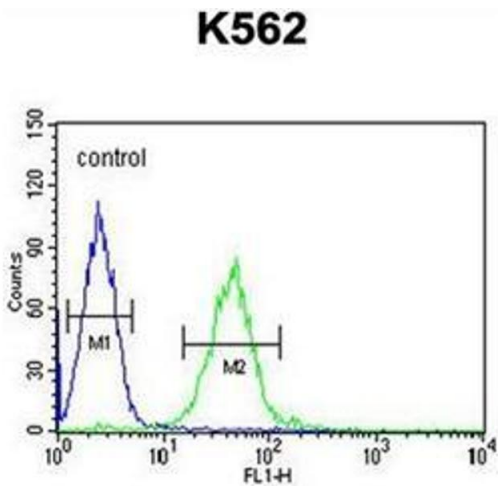
Background:	GTP-binding proteins, or G proteins, constitute a superfamily capable of binding GTP or GDP. G proteins are activated by binding GTP and are inactivated by hydrolyzing GTP to GDP. This general mechanism enables G proteins to perform a wide range of biologic activities.Synonyms: GTP-binding protein 2
Molecular Weight:	65768 Da
Gene ID:	54676
NCBI Accession:	<a href="#">NP_061969</a>

## Application Details

Application Notes:	Optimal working dilution should be determined by the investigator.
Restrictions:	For Research Use only

## Handling

Format:	Liquid
Concentration:	0.25 mg/mL
Buffer:	PBS containing 0.09 % (W/V) Sodium Azide as preservative
Preservative:	Sodium azide
Precaution of Use:	This product contains sodium azide: a POISONOUS AND HAZARDOUS SUBSTANCE which should be handled by trained staff only.
Handling Advice:	Avoid repeated freezing and thawing.
Storage:	4 °C/-20 °C
Storage Comment:	Store undiluted at 2-8 °C for one month or (in aliquots) at -20 °C for longer.



**Flow Cytometry**

**Image 1.** Flow cytometric analysis of K562 cells using GTPBP2 antibody (C-term) Cat.-No AP51978PU-N (right histogram) compared to a negative control cell (left histogram). FITC-conjugated goat-anti-rabbit secondary antibodies were used for the analysis.

**Immunohistochemistry (Paraffin-embedded Sections)**

**Image 2.** Immunohistochemistry analysis in formalin fixed and paraffin embedded human testis tissue reacted with GTPBP2 antibody (C-term) followed by peroxidase conjugation of the secondary antibody and DAB staining.

**Western Blotting**

**Image 3.** Western blot analysis of GTPBP2 Antibody (C-term) in CHO, K562 and mouse cerebellum cell line lysates (35ug/lane). This demonstrates the GTPBP2 antibody detected the GTPBP2 protein (arrow).