



Datasheet for ABIN952657  
**anti-GTPBP8 antibody (Middle Region)**



[Go to Product page](#)

3 Images

Overview

Quantity:	0.4 mL
Target:	GTPBP8
Binding Specificity:	AA 129-158, Middle Region
Reactivity:	Human
Host:	Rabbit
Clonality:	Polyclonal
Application:	Western Blotting (WB), Flow Cytometry (FACS), Immunohistochemistry (Paraffin-embedded Sections) (IHC (p)), Enzyme Immunoassay (EIA)

Product Details

Immunogen:	KLH conjugated synthetic peptide between 129-158 amino acids from the Central region of human GTPBP8
Isotype:	Ig Fraction
Specificity:	This antibody recognizes Human GTPBP8 (Center).
Purification:	Protein A column, followed by peptide affinity purification

Target Details

Target:	GTPBP8
Alternative Name:	GTPBP8 ( <a href="#">GTPBP8 Products</a> )
Background:	Synonyms: GTP-binding protein 8

## Target Details

Molecular Weight:	32147 Da
Gene ID:	29083
NCBI Accession:	<a href="#">NP_054889</a>

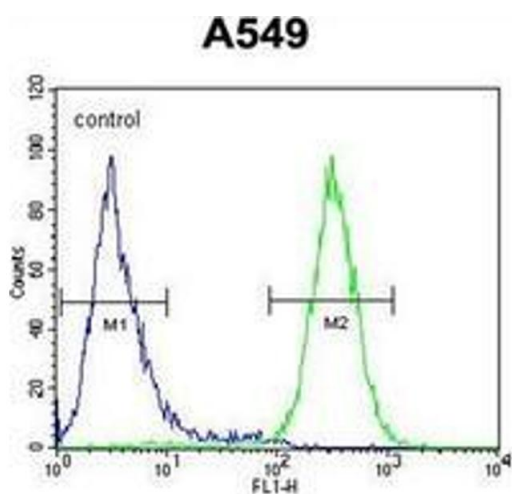
## Application Details

Application Notes:	Optimal working dilution should be determined by the investigator.
Restrictions:	For Research Use only

## Handling

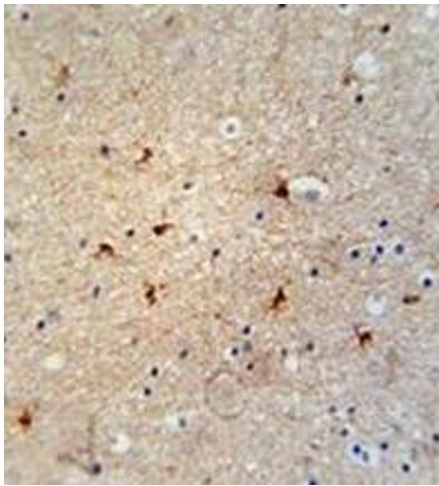
Format:	Liquid
Concentration:	0.25 mg/mL
Buffer:	PBS containing 0.09 % (W/V) Sodium Azide as preservative
Preservative:	Sodium azide
Precaution of Use:	This product contains sodium azide: a POISONOUS AND HAZARDOUS SUBSTANCE which should be handled by trained staff only.
Handling Advice:	Avoid repeated freezing and thawing.
Storage:	4 °C/-20 °C
Storage Comment:	Store undiluted at 2-8 °C for one month or (in aliquots) at -20 °C for longer.

## Images



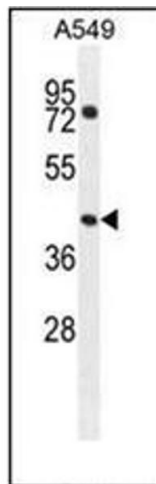
### Flow Cytometry

**Image 1.** Flow cytometric analysis of A549 cells using GTPBP8 Antibody (Center) Cat.-No AP51979PU-N (right histogram) compared to a negative control cell (left histogram). FITC-conjugated goat-anti-rabbit secondary antibodies were used for the analysis.



### Immunohistochemistry (Paraffin-embedded Sections)

**Image 2.** Immunohistochemistry analysis in formalin fixed and paraffin embedded human brain tissue reacted with GTPBP8 Antibody (Center) followed which was peroxidase conjugated to the secondary antibody and followed by DAB staining.



### Western Blotting

**Image 3.** Western blot analysis of GTPBP8 Antibody (Center) in A549 cell line lysates (35ug/lane). This demonstrates the GTPBP8 antibody detected the GTPBP8 protein (arrow).