



[Go to Product page](#)

Datasheet for ABIN952658  
**anti-OLA1 antibody (N-Term)**

2 Images

Overview

Quantity:	0.4 mL
Target:	OLA1
Binding Specificity:	AA 42-71, N-Term
Reactivity:	Human
Host:	Rabbit
Clonality:	Polyclonal
Conjugate:	This OLA1 antibody is un-conjugated
Application:	Western Blotting (WB), Enzyme Immunoassay (EIA)

Product Details

Immunogen:	KLH conjugated synthetic peptide between 42-71 amino acids from the N-terminal region of Human OLA1
Isotype:	Ig Fraction
Specificity:	This antibody recognizes Human OLA1 (N-term).
Purification:	Protein A column, followed by peptide affinity purification

Target Details

Target:	OLA1
Alternative Name:	GTPBP9 / OLA1 ( <a href="#">OLA1 Products</a> )
Background:	OLA1 hydrolyzes ATP, and can also hydrolyze GTP with lower efficiency. Has lower affinity for

## Target Details

GTP.Synonyms: GTP-binding protein 9, Obg-like ATPase 1

Molecular Weight: 44744 Da

Gene ID: 29789

NCBI Accession: [NP\\_001011708](#)

## Application Details

Application Notes: Optimal working dilution should be determined by the investigator.

Restrictions: For Research Use only

## Handling

Format: Liquid

Concentration: 0.25 mg/mL

Buffer: PBS containing 0.09 % (W/V) Sodium Azide as preservative

Preservative: Sodium azide

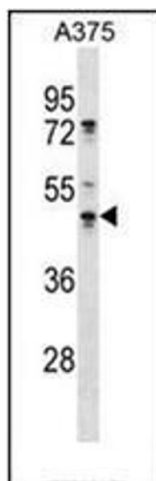
Precaution of Use: This product contains sodium azide: a POISONOUS AND HAZARDOUS SUBSTANCE which should be handled by trained staff only.

Handling Advice: Avoid repeated freezing and thawing.

Storage: 4 °C/-20 °C

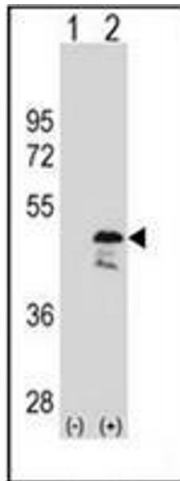
Storage Comment: Store undiluted at 2-8 °C for one month or (in aliquots) at -20 °C for longer.

## Images



### Western Blotting

**Image 1.** Western blot analysis of GTPBP9 / OLA1 Antibody (N-term) in A375 cell line lysates (35ug/lane). This demonstrates the OLA1 antibody detected the OLA1 protein (arrow).



### Western Blotting

**Image 2.** Western blot analysis of OLA1 (arrow) using GTPBP9 / OLA1 Antibody (N-term) Cat.-No AP52995PU-N. 293 cell lysates (2 ug/lane) either nontransfected (Lane 1) or transiently transfected (Lane 2) with the OLA1 gene.