



[Go to Product page](#)

Datasheet for ABIN952663

## anti-GUCY2D antibody (Middle Region)

### 3 Images

#### Overview

Quantity:	0.4 mL
Target:	GUCY2D
Binding Specificity:	AA 547-578, Middle Region
Reactivity:	Human
Host:	Rabbit
Clonality:	Polyclonal
Conjugate:	This GUCY2D antibody is un-conjugated
Application:	Western Blotting (WB), Flow Cytometry (FACS), Immunohistochemistry (Paraffin-embedded Sections) (IHC (p)), Enzyme Immunoassay (EIA)

#### Product Details

Immunogen:	KLH conjugated synthetic peptide between 547-578 amino acids from the Central region of human GUCY2D / RETGC1
Isotype:	Ig Fraction
Specificity:	This antibody recognizes Human GUCY2D / RETGC1 (Center).
Purification:	Protein A column, followed by peptide affinity purification

#### Target Details

Target:	GUCY2D
Alternative Name:	GUCY2D / RETGC1 ( <a href="#">GUCY2D Products</a> )

## Target Details

---

**Background:** This gene encodes a retina-specific guanylate cyclase, which is a member of the membrane guanylyl cyclase family. Like other membrane guanylyl cyclases, this enzyme has a hydrophobic amino-terminal signal sequence followed by a large extracellular domain, a single membrane spanning domain, a kinase homology domain, and a guanylyl cyclase catalytic domain. In contrast to other membrane guanylyl cyclases, this enzyme is not activated by natriuretic peptides. Mutations in this gene result in Leber congenital amaurosis and cone-rod dystrophy-6 diseases. [provided by RefSeq].Synonyms: CORD6, GUC1A4, GUC2D, PGCD, RETGC, RETGC-1, Retinal guanylyl cyclase 1, Rod outer segment membrane guanylate cyclase, retinal Guanylate cyclase 2D

**Molecular Weight:** 120059 Da

**Gene ID:** 3000

**NCBI Accession:** [NP\\_000171](#)

**Pathways:** [Regulation of G-Protein Coupled Receptor Protein Signaling, Phototransduction](#)

## Application Details

---

**Application Notes:** Optimal working dilution should be determined by the investigator.

**Restrictions:** For Research Use only

## Handling

---

**Format:** Liquid

**Concentration:** 0.25 mg/mL

**Buffer:** PBS containing 0.09 % (W/V) Sodium Azide as preservative

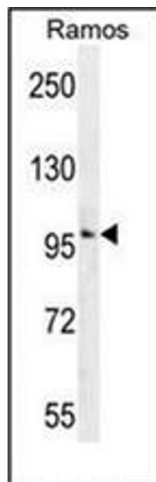
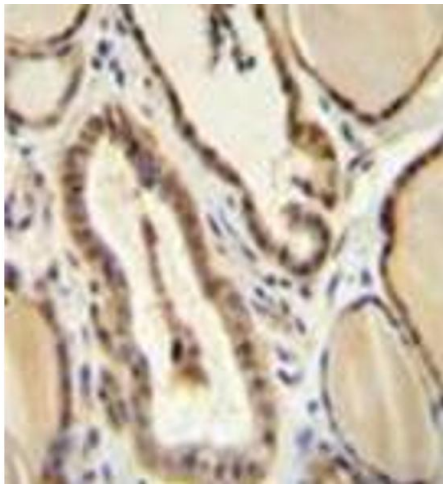
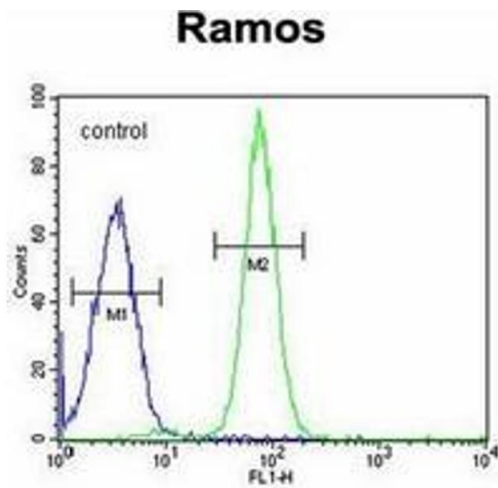
**Preservative:** Sodium azide

**Precaution of Use:** This product contains sodium azide: a POISONOUS AND HAZARDOUS SUBSTANCE which should be handled by trained staff only.

**Handling Advice:** Avoid repeated freezing and thawing.

**Storage:** 4 °C/-20 °C

**Storage Comment:** Store undiluted at 2-8 °C for one month or (in aliquots) at -20 °C for longer.



### Flow Cytometry

**Image 1.** Flow cytometric analysis of Ramos cells using GUCY2D / GUCY2D / RETGC1 Antibody (Center) Cat.-No AP51984PU-N (right histogram) compared to a negative control cell (left histogram). FITC-conjugated goat-anti-rabbit secondary antibodies were used for the analysis.

### Immunohistochemistry (Paraffin-embedded Sections)

**Image 2.** Immunohistochemistry analysis in formalin fixed and paraffin embedded human thyroid tissue reacted with GUCY2D / GUCY2D / RETGC1 Antibody (Center) followed which was peroxidase conjugated to the secondary antibody and followed by DAB staining.

### Western Blotting

**Image 3.** Western blot analysis of GUCY2D / GUCY2D / RETGC1 Antibody (Center) Cat.-No AP51984PU-N in Ramos cell line lysates (35ug/lane). This demonstrates the GUCY2D antibody detected the GUCY2D protein (arrow).