



[Go to Product page](#)

Datasheet for ABIN952667

anti-H2AFY2 antibody (N-Term)

2 Images

Overview

Quantity:	0.4 mL
Target:	H2AFY2
Binding Specificity:	AA 14-43, N-Term
Reactivity:	Human, Mouse
Host:	Rabbit
Clonality:	Polyclonal
Application:	Western Blotting (WB), Flow Cytometry (FACS), Enzyme Immunoassay (EIA)

Product Details

Immunogen:	KLH conjugated synthetic peptide between 14-43 amino acids from the N-terminal region of Human H2AFY2 / MACROH2A2
Isotype:	Ig Fraction
Specificity:	This antibody recognizes Human and Mouse H2AFY2 / MACROH2A2 (N-term).
Purification:	Protein A column, followed by peptide affinity purification

Target Details

Target:	H2AFY2
Alternative Name:	H2AFY2 / MACROH2A2 (H2AFY2 Products)
Background:	Variant histone H2A which replaces conventional H2A in a subset of nucleosomes where it represses transcription. Nucleosomes wrap and compact DNA into chromatin, limiting DNA accessibility to the cellular machineries which require DNA as a template. Histones thereby play

Target Details

a central role in transcription regulation, DNA repair, DNA replication and chromosomal stability. DNA accessibility is regulated via a complex set of post-translational modifications of histones, also called histone code, and nucleosome remodeling. May be involved in stable X chromosome inactivation. Synonyms: Core histone macro-H2A.2, Histone macroH2A2, mH2A2

Molecular Weight: 40058 Da

Gene ID: 55506

NCBI Accession: [NP_061119](#)

Application Details

Application Notes: Optimal working dilution should be determined by the investigator.

Restrictions: For Research Use only

Handling

Format: Liquid

Concentration: 0.25 mg/mL

Buffer: PBS containing 0.09 % (W/V) Sodium Azide as preservative

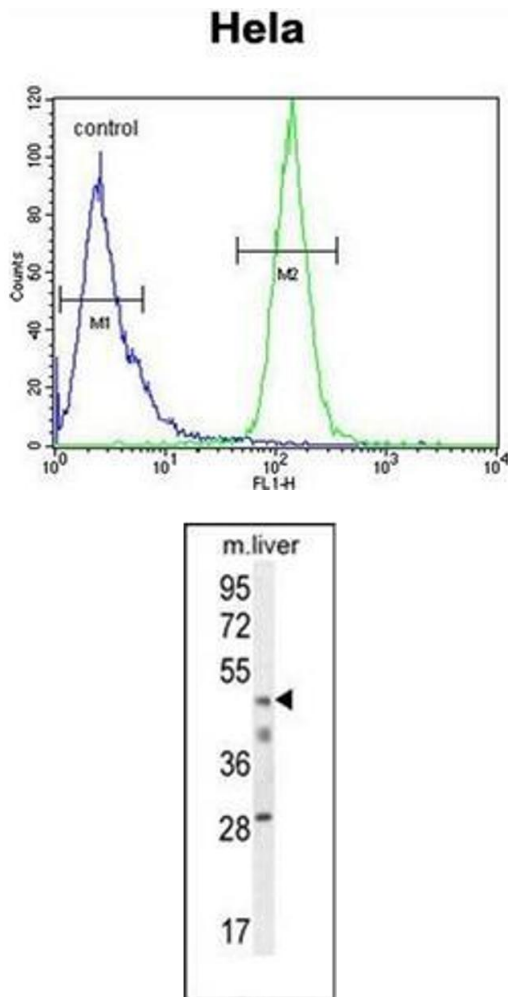
Preservative: Sodium azide

Precaution of Use: This product contains sodium azide: a POISONOUS AND HAZARDOUS SUBSTANCE which should be handled by trained staff only.

Handling Advice: Avoid repeated freezing and thawing.

Storage: 4 °C/-20 °C

Storage Comment: Store undiluted at 2-8 °C for one month or (in aliquots) at -20 °C for longer.



Flow Cytometry

Image 1. Flow cytometric analysis of Hela cells using H2AFY2 / MACROH2A2 Antibody (N-term) Cat.-No AP51990PU-N (right histogram) compared to a negative control cell (left histogram). FITC-conjugated goat-anti-rabbit secondary antibodies were used for the analysis.

Western Blotting

Image 2. Western blot analysis of H2AFY2 / MACROH2A2 Antibody (N-term) in mouse liver tissue lysates (35ug/lane). This demonstrates the H2AFY2 antibody detected the H2AFY2 protein (arrow).