

Datasheet for ABIN952678
anti-Haptoglobin antibody (Middle Region)

5 Images

1 Publication

[Go to Product page](#)

Overview

Quantity:	0.4 mL
Target:	Haptoglobin (HP)
Binding Specificity:	AA 299-326, Middle Region
Reactivity:	Human
Host:	Rabbit
Clonality:	Polyclonal
Application:	Western Blotting (WB), Flow Cytometry (FACS), Immunofluorescence (IF), Immunohistochemistry (Paraffin-embedded Sections) (IHC (p)), Enzyme Immunoassay (EIA)

Product Details

Immunogen:	KLH conjugated synthetic peptide between 299-326 amino acids from the Central region of Human Haptoglobin Genename: HP
Isotype:	Ig Fraction
Specificity:	This antibody recognizes Human Haptoglobin (Center).
Purification:	Protein A column, followed by peptide affinity purification

Target Details

Target:	Haptoglobin (HP)
Alternative Name:	Haptoglobin (HP Products)
Background:	This gene encodes a preproprotein, which is processed to yield both alpha and beta chains, which subsequently combine as a tetramer to produce haptoglobin. Haptoglobin functions to

Target Details

bind free plasma hemoglobin, which allows degradative enzymes to gain access to the hemoglobin, while at the same time preventing loss of iron through the kidneys and protecting the kidneys from damage by hemoglobin. Mutations in this gene and/or its regulatory regions cause ahaptoglobinemia or hypohaptoglobinemia. This gene has also been linked to diabetic nephropathy, the incidence of coronary artery disease in type 1 diabetes, Crohn's disease, inflammatory disease behavior, primary sclerosing cholangitis, susceptibility to idiopathic Parkinson's disease, and a reduced incidence of Plasmodium falciparum malaria. A similar duplicated gene is located next to this gene on chromosome 16. Multiple transcript variants encoding different isoforms have been found for this gene.

Molecular Weight: 45205 Da

Gene ID: 3240

NCBI Accession: [NP_001119574](#)

Pathways: [Transition Metal Ion Homeostasis](#)

Application Details

Application Notes: Optimal working dilution should be determined by the investigator.

Restrictions: For Research Use only

Handling

Format: Liquid

Concentration: 0.25 mg/mL

Buffer: PBS containing 0.09 % (W/V) Sodium Azide as preservative

Preservative: Sodium azide

Precaution of Use: This product contains sodium azide: a POISONOUS AND HAZARDOUS SUBSTANCE which should be handled by trained staff only.

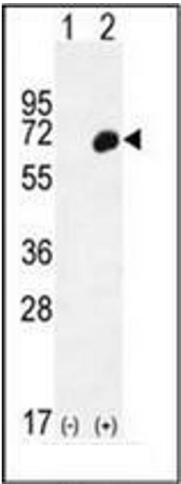
Handling Advice: Avoid repeated freezing and thawing.

Storage: 4 °C/-20 °C

Storage Comment: Store undiluted at 2-8 °C for one month or (in aliquots) at -20 °C for longer.

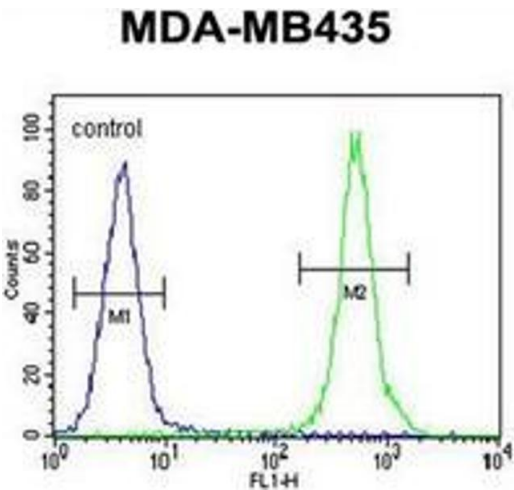
Product cited in: Higham, Baker, Jackson, Shah, Lea, Singh: "Dysregulation of the CD163-Haptoglobin Axis in the Airways of COPD Patients." in: **Cells**, Vol. 11, Issue 1, (2022) ([PubMed](#)).

Images



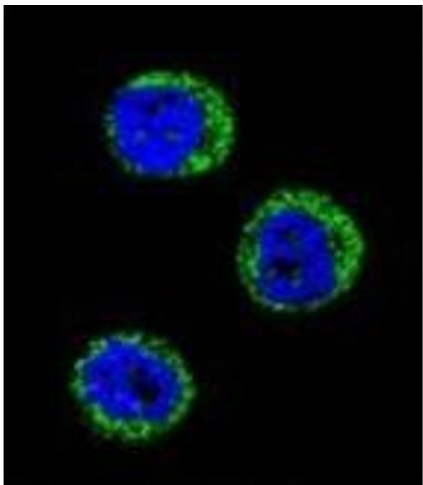
Western Blotting

Image 1. Western blot analysis of HP (arrow) using Haptoglobin Antibody (Center) Cat.-No AP52089PU-N. 293 cell lysates (2 ug/lane) either nontransfected (Lane 1) or transiently transfected (Lane 2) with the HP gene.



Flow Cytometry

Image 2. Flow cytometric analysis of MDA-MB435 cells using Haptoglobin Antibody (Center) Cat.-No AP52089PU-N (right histogram) compared to a negative control cell (left histogram). FITC-conjugated goat-anti-rabbit secondary antibodies were used for the analysis.



Immunofluorescence

Image 3. Confocal immunofluorescent analysis of Haptoglobin Antibody (Center) Cat.-No AP52089PU-N with MDA-MB435 cell followed by Alexa Fluor 488-conjugated goat anti-rabbit IgG (green). DAPI was used to stain the cell nuclear (blue).

Please check the [product details page](#) for more images. Overall 5 images are available for ABIN952678.