

Datasheet for ABIN952682  
**anti-HAUS3 antibody (Middle Region)**[Go to Product page](#)

## 2 Images

## Overview

Quantity:	0.4 mL
Target:	HAUS3
Binding Specificity:	AA 379-408, Middle Region
Reactivity:	Human
Host:	Rabbit
Clonality:	Polyclonal
Conjugate:	This HAUS3 antibody is un-conjugated
Application:	Western Blotting (WB), Immunohistochemistry (Paraffin-embedded Sections) (IHC (p)), Enzyme Immunoassay (EIA)

## Product Details

Immunogen:	KLH conjugated synthetic peptide between 379-408 amino acids from the Central region of human HAUS3
Isotype:	Ig Fraction
Specificity:	This antibody recognizes Human HAUS3 (Center).
Purification:	Protein A column, followed by peptide affinity purification

## Target Details

Target:	HAUS3
Alternative Name:	HAUS3 ( <a href="#">HAUS3 Products</a> )

## Target Details

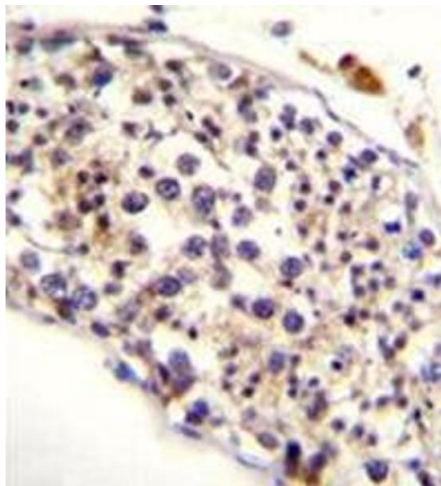
Background:	HAUS3 is 1 of 8 subunits of the 390-kD human augmin complex, or HAUS complex. The augmin complex was first identified in Drosophila, and its name comes from the Latin verb 'augmentare,' meaning 'to increase.' The augmin complex is a microtubule-binding complex involved in microtubule generation within the mitotic spindle and is vital to mitotic spindle assembly (Goshima et al., 2008 [PubMed 18443220], Uehara et al., 2009 [PubMed 19369198]).Synonyms: C4orf15, HAUS augmin-like complex subunit 3
Molecular Weight:	69650 Da
Gene ID:	79441
NCBI Accession:	<a href="#">NP_078787</a>

## Application Details

Application Notes:	Optimal working dilution should be determined by the investigator.
Restrictions:	For Research Use only

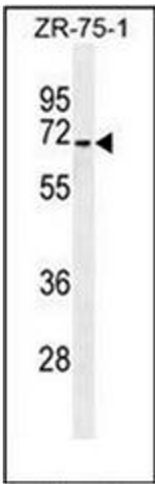
## Handling

Format:	Liquid
Concentration:	0.25 mg/mL
Buffer:	PBS containing 0.09 % (W/V) Sodium Azide as preservative
Preservative:	Sodium azide
Precaution of Use:	This product contains sodium azide: a POISONOUS AND HAZARDOUS SUBSTANCE which should be handled by trained staff only.
Handling Advice:	Avoid repeated freezing and thawing.
Storage:	4 °C/-20 °C
Storage Comment:	Store undiluted at 2-8 °C for one month or (in aliquots) at -20 °C for longer.



**Immunohistochemistry (Paraffin-embedded Sections)**

**Image 1.** Immunohistochemistry analysis in formalin fixed and paraffin embedded human testis tissue reacted with HAUS3 Antibody (Center) followed by peroxidase conjugation of the secondary antibody and DAB staining.



**Western Blotting**

**Image 2.** Western blot analysis of HAUS3 Antibody (Center) in ZR-75-1 cell line lysates (35ug/lane). This demonstrates the HAUS3 antibody detected the HAUS3 protein (arrow).