

Datasheet for ABIN952686  
**anti-HCCS antibody (Middle Region)**

## 3 Images

[Go to Product page](#)

## Overview

|                      |  |
|----------------------|--|
| Quantity:            | 0.4 mL   |
| Target:              | HCCS   |
| Binding Specificity: | AA 179-209, Middle Region  |
| Reactivity:          | Human, Mouse   |
| Host:                | Rabbit   |
| Clonality:           | Polyclonal   |
| Conjugate:           | This HCCS antibody is un-conjugated  |
| Application:         | Western Blotting (WB), Immunohistochemistry (Paraffin-embedded Sections) (IHC (p)) |

## Product Details

|               |   |
|---------------|---|
| Immunogen:    | KLH conjugated synthetic peptide between 179~209 amino acids from the Central region of human HCCS / CCHL |
| Isotype:      | Ig Fraction   |
| Specificity:  | This antibody recognizes Human and Mouse HCCS / CCHL (Center).  |
| Purification: | Protein A column, followed by peptide affinity purification   |

## Target Details

|                   |   |
|-------------------|---|
| Target:           | HCCS  |
| Alternative Name: | HCCS / CCHL ( <a href="#">HCCS Products</a> )   |
| Background:       | The protein encoded by this gene is an enzyme that covalently links a heme group to the |

## Target Details

apoprotein of cytochrome c. Defects in this gene are a cause of microphthalmia syndromic type 7 (MCOPS7). Three transcript variants encoding the same protein have been found for this gene. Synonyms: Cytochrome c-type heme lyase, Holocytochrome c-type synthase

Molecular Weight: 30602 Da

Gene ID: 3052

NCBI Accession: [NP\\_001116080](#)

## Application Details

Application Notes: Optimal working dilution should be determined by the investigator.

Restrictions: For Research Use only

## Handling

Format: Liquid

Concentration: 0.25 mg/mL

Buffer: PBS containing 0.09 % (W/V) Sodium Azide as preservative

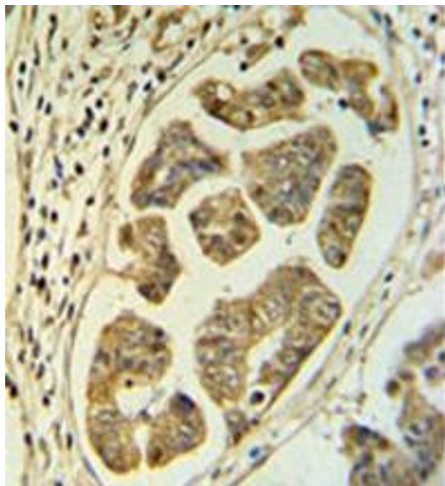
Preservative: Sodium azide

Precaution of Use: This product contains sodium azide: a POISONOUS AND HAZARDOUS SUBSTANCE which should be handled by trained staff only.

Handling Advice: Avoid repeated freezing and thawing.

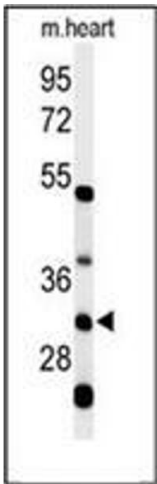
Storage: 4 °C/-20 °C

Storage Comment: Store undiluted at 2-8 °C for one month or (in aliquots) at -20 °C for longer.



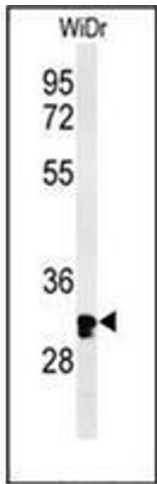
**Immunohistochemistry (Paraffin-embedded Sections)**

**Image 1.** Immunohistochemistry analysis in formalin fixed and paraffin embedded colon carcinoma reacted with HCCS / CCHL Antibody (Center) followed which was peroxidase conjugated to the secondary antibody and followed by DAB staining.



**Western Blotting**

**Image 2.** Western blot analysis of HCCS / CCHL Antibody (Center) in mouse heart tissue lysates (35ug/lane). HCCS (arrow) was detected using the purified Pab.



**Western Blotting**

**Image 3.** Western blot analysis of HCCS / CCHL Antibody (Center) in WiDr cell line lysates (35ug/lane). HCCS (arrow) was detected using the purified Pab.