

Datasheet for ABIN952689  
**anti-KBTBD13 antibody (C-Term)**

## 2 Images

[Go to Product page](#)

## Overview

Quantity:	0.4 mL
Target:	KBTBD13
Binding Specificity:	AA 416-446, C-Term
Reactivity:	Human
Host:	Rabbit
Clonality:	Polyclonal
Application:	Western Blotting (WB), Immunohistochemistry (Paraffin-embedded Sections) (IHC (p)), Enzyme Immunoassay (EIA)

## Product Details

Immunogen:	KLH conjugated synthetic peptide between 416-446 amino acids from the C-terminal region of Human hCG_1645727
Isotype:	Ig Fraction
Specificity:	This antibody recognizes Human hCG_1645727 (C-term).
Purification:	Protein A column, followed by peptide affinity purification

## Target Details

Target:	KBTBD13
Abstract:	<a href="#">KBTBD13 Products</a>
Background:	The gene belongs to a family of genes encoding proteins containing a BTB domain and several kelch repeats. The BTB domain functions as a protein-protein interaction module, which

## Target Details

includes an ability to self-associate or to interact with non-BTB domain-containing proteins. The kelch motif typically occurs in groups of five to seven repeats, and has been found in proteins with diverse functions. Known functions of these family members include transcription regulation, ion channel tetramerization and gating, protein ubiquitination or degradation, and cytoskeleton regulation. The exact function of this family member has yet to be determined. Synonyms: KBTBD13, Kelch repeat and BTB domain-containing protein 13

Molecular Weight: 49485 Da

Gene ID: 390594

NCBI Accession: [NP\\_001094832](#)

## Application Details

Application Notes: Optimal working dilution should be determined by the investigator.

Restrictions: For Research Use only

## Handling

Format: Liquid

Concentration: 0.25 mg/mL

Buffer: PBS containing 0.09 % (W/V) Sodium Azide as preservative

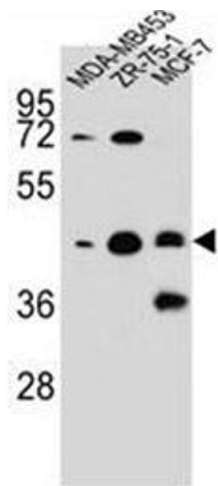
Preservative: Sodium azide

Precaution of Use: This product contains sodium azide: a POISONOUS AND HAZARDOUS SUBSTANCE which should be handled by trained staff only.

Handling Advice: Avoid repeated freezing and thawing.

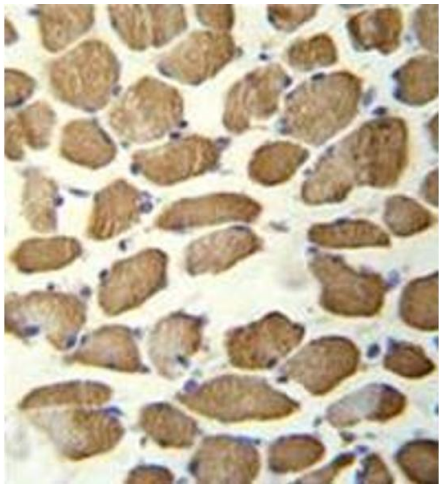
Storage: 4 °C/-20 °C

Storage Comment: Store undiluted at 2-8 °C for one month or (in aliquots) at -20 °C for longer.



### Western Blotting

**Image 1.** Western blot analysis of hCG\_1645727 Antibody (C-term) in MDA-MB453,ZR-75-1,MCF-7 cell line lysates (35ug/lane). This demonstrates the hCG\_1645727 antibody detected the hCG\_1645727 protein (arrow).



### Immunohistochemistry (Paraffin-embedded Sections)

**Image 2.** Immunohistochemistry analysis in formalin fixed and paraffin embedded human skeletal muscle reacted with hCG\_1645727 Antibody (C-term) followed by peroxidase conjugation of the secondary antibody and DAB staining.