

Datasheet for ABIN952690
anti-CLDN25 antibody (Middle Region)[Go to Product page](#)

1 Image

Overview

Quantity:	0.4 mL
Target:	CLDN25
Binding Specificity:	AA 106-136, Middle Region
Reactivity:	Human
Host:	Rabbit
Clonality:	Polyclonal
Conjugate:	This CLDN25 antibody is un-conjugated
Application:	Western Blotting (WB), Enzyme Immunoassay (EIA)

Product Details

Immunogen:	KLH conjugated synthetic peptide between 106-136 amino acids from the Central region of human hCG ₁₆₄₆₄₂₀ .
Isotype:	Ig Fraction
Specificity:	This antibody recognizes Human hCG ₁₆₄₆₄₂₀ (Center).
Purification:	Protein A column, followed by peptide affinity purification

Target Details

Target:	CLDN25
Abstract:	CLDN25 Products
Background:	This gene encodes a member of the claudin family. Claudins are integral membrane proteins

Target Details

and components of tight junction strands. Tight junction strands serve as a physical barrier to prevent solutes and water from passing freely through the paracellular space between epithelial or endothelial cell sheets, and also play critical roles in maintaining cell polarity and signal transductions. Synonyms: CLDN25, Putative claudin-25

Molecular Weight: 25394 Da

Gene ID: 644672

NCBI Accession: [NP_001094859](#)

Pathways: [Hepatitis C](#)

Application Details

Application Notes: Optimal working dilution should be determined by the investigator.

Restrictions: For Research Use only

Handling

Format: Liquid

Concentration: 0.25 mg/mL

Buffer: PBS containing 0.09 % (W/V) Sodium Azide as preservative

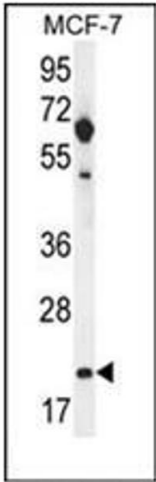
Preservative: Sodium azide

Precaution of Use: This product contains sodium azide: a POISONOUS AND HAZARDOUS SUBSTANCE which should be handled by trained staff only.

Handling Advice: Avoid repeated freezing and thawing.

Storage: 4 °C/-20 °C

Storage Comment: Store undiluted at 2-8 °C for one month or (in aliquots) at -20 °C for longer.



Western Blotting

Image 1. Western blot analysis of hCG_1646420 Antibody (Center) in MCF-7 cell line lysates (35ug/lane). This demonstrates the hCG_1646420 antibody detected the hCG_1646420 protein (arrow).