



Datasheet for ABIN952691

## anti-Primary Ciliary Dyskinesia Protein 1 (PCDP1) (AA 508-538), (C-Term) antibody



[Go to Product page](#)

### 2 Images

#### Overview

Quantity:	0.4 mL
Target:	Primary Ciliary Dyskinesia Protein 1 (PCDP1)
Binding Specificity:	AA 508-538, C-Term
Reactivity:	Human, Mouse
Host:	Rabbit
Clonality:	Polyclonal
Conjugate:	Un-conjugated
Application:	Western Blotting (WB), Flow Cytometry (FACS), Enzyme Immunoassay (EIA)

#### Product Details

Immunogen:	KLH conjugated synthetic peptide between 508-538 amino acids from the C-terminal region of human hCG_17324
Isotype:	Ig Fraction
Specificity:	This antibody recognizes Human and Mouse hCG_17324 (C-term).
Purification:	Protein A column, followed by peptide affinity purification

#### Target Details

Target:	Primary Ciliary Dyskinesia Protein 1 (PCDP1)
Abstract:	<a href="#">PCDP1 Products</a>
Background:	Synonyms: PCDP1, Primary ciliary dyskinesia protein 1

## Target Details

Molecular Weight:	96891 Da
Gene ID:	200373
NCBI Accession:	<a href="#">NP_001025167</a>

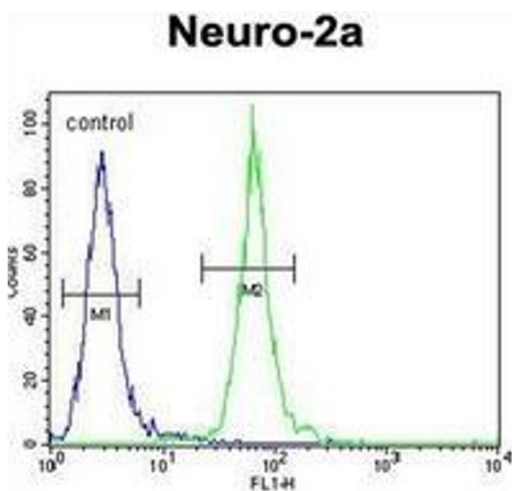
## Application Details

Application Notes:	Optimal working dilution should be determined by the investigator.
Restrictions:	For Research Use only

## Handling

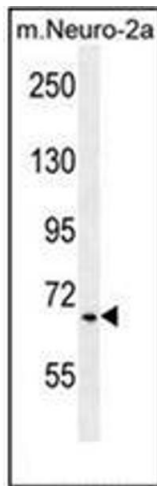
Format:	Liquid
Concentration:	0.25 mg/mL
Buffer:	PBS containing 0.09 % (W/V) Sodium Azide as preservative
Preservative:	Sodium azide
Precaution of Use:	This product contains sodium azide: a POISONOUS AND HAZARDOUS SUBSTANCE which should be handled by trained staff only.
Handling Advice:	Avoid repeated freezing and thawing.
Storage:	4 °C/-20 °C
Storage Comment:	Store undiluted at 2-8 °C for one month or (in aliquots) at -20 °C for longer.

## Images



### Flow Cytometry

**Image 1.** Flow cytometric analysis of Neuro-2a cells using hCG\_17324 Antibody (C-term) Cat.-No AP52017PU-N (right histogram) compared to a negative control cell (left histogram). FITC-conjugated goat-anti-rabbit secondary antibodies were used for the analysis.



### Western Blotting

**Image 2.** Western blot analysis of hCG\_17324 Antibody (C-term) in mouse Neuro-2a cell line lysates (35ug/lane). This demonstrates the hCG\_17324 antibody detected the hCG\_17324 protein (arrow).