

Datasheet for ABIN952706
anti-HEMK1 antibody (C-Term)[Go to Product page](#)

2 Images

Overview

Quantity:	0.4 mL
Target:	HEMK1
Binding Specificity:	AA 311-338, C-Term
Reactivity:	Human
Host:	Rabbit
Clonality:	Polyclonal
Conjugate:	This HEMK1 antibody is un-conjugated
Application:	Western Blotting (WB), Flow Cytometry (FACS), Immunohistochemistry (Paraffin-embedded Sections) (IHC (p)), Enzyme Immunoassay (EIA)

Product Details

Immunogen:	KLH conjugated synthetic peptide between 311-338 amino acids from the C-terminal region of human HEMK1
Isotype:	Ig Fraction
Specificity:	This antibody recognizes Human HEMK1 (C-term).
Purification:	Protein A column, followed by peptide affinity purification

Target Details

Target:	HEMK1
Alternative Name:	HEMK1 (HEMK1 Products)

Target Details

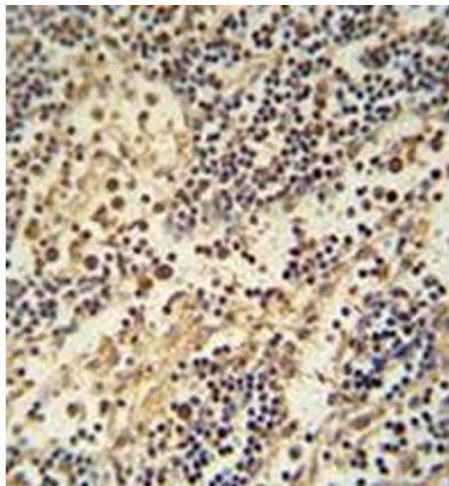
Background:	Probable protein methyltransferase. May methylate a Gln residue in target proteins (By similarity).Synonyms: HemK methyltransferase family member 1, M.HsaHemKP
Molecular Weight:	38231 Da
Gene ID:	51409
NCBI Accession:	NP_057257

Application Details

Application Notes:	Optimal working dilution should be determined by the investigator.
Restrictions:	For Research Use only

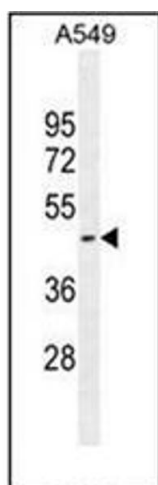
Handling

Format:	Liquid
Concentration:	0.25 mg/mL
Buffer:	PBS containing 0.09 % (W/V) Sodium Azide as preservative
Preservative:	Sodium azide
Precaution of Use:	This product contains sodium azide: a POISONOUS AND HAZARDOUS SUBSTANCE which should be handled by trained staff only.
Handling Advice:	Avoid repeated freezing and thawing.
Storage:	4 °C/-20 °C
Storage Comment:	Store undiluted at 2-8 °C for one month or (in aliquots) at -20 °C for longer.



Immunohistochemistry (Paraffin-embedded Sections)

Image 1. Immunohistochemistry analysis in formalin fixed and paraffin embedded human lymph node reacted with HEMK1 Antibody (C-term) followed which was peroxidase-conjugated to the secondary antibody, followed by DAB staining.



Western Blotting

Image 2. Western blot analysis of HEMK1 Antibody (C-term) in A549 cell line lysates (35ug/lane). This demonstrates the HEMK1 antibody detected the HEMK1 protein (arrow).