

Datasheet for ABIN952707  
**anti-HBA1 antibody (Middle Region)**

## 3 Images

[Go to Product page](#)

## Overview

Quantity:	200 µL
Target:	HBA1
Binding Specificity:	AA 107-136, Middle Region
Reactivity:	Human, Mouse
Host:	Rabbit
Clonality:	Polyclonal
Conjugate:	This HBA1 antibody is un-conjugated
Application:	Western Blotting (WB), Immunohistochemistry (Paraffin-embedded Sections) (IHC (p)), Enzyme Immunoassay (EIA), Flow Cytometry (FACS)

## Product Details

Immunogen:	KLH conjugated synthetic peptide between 107~136 amino acids from the Central region of human Hemoglobin alpha Genename: HBA2, HBA1
Isotype:	Ig Fraction
Specificity:	This antibody recognizes Human and Mouse Hemoglobin alpha (Center).
Purification:	Protein A column, followed by peptide affinity purification

## Target Details

Target:	HBA1
Alternative Name:	Hemoglobin alpha ( <a href="#">HBA1 Products</a> )

## Target Details

**Background:** HBA2 located on chromosome 16 spans about 30 kb and includes seven loci: 5'- zeta - pseudozeta - mu - pseudoalpha-1 - alpha-2 - alpha-1 - theta - 3'. The alpha-2 (HBA2) and alpha-1 (HBA1) coding sequences are identical. These genes differ slightly over the 5' untranslated regions and the introns, but they differ significantly over the 3' untranslated regions. Two alpha chains plus two beta chains constitute HbA, which in normal adult life comprises about 97 % of the total hemoglobin, alpha chains combine with delta chains to constitute HbA-2, which with HbF (fetal hemoglobin) makes up the remaining 3 % of adult hemoglobin. Alpha thalassemias result from deletions of each of the alpha genes as well as deletions of both HBA2 and HBA1, some nondeletion alpha thalassemias have also been reported. Synonyms: Alpha-globin, HBA1, Hemoglobin alpha chain

**Molecular Weight:** 15258 Da

**Gene ID:** 3039

**NCBI Accession:** [NP\\_000508](#)

## Application Details

**Application Notes:** Optimal working dilution should be determined by the investigator.

**Restrictions:** For Research Use only

## Handling

**Format:** Liquid

**Concentration:** 0.25 mg/mL

**Buffer:** PBS containing 0.09 % (W/V) Sodium Azide as preservative

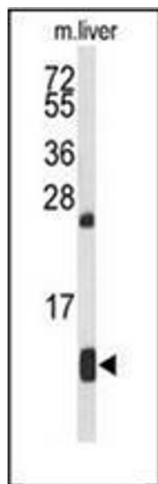
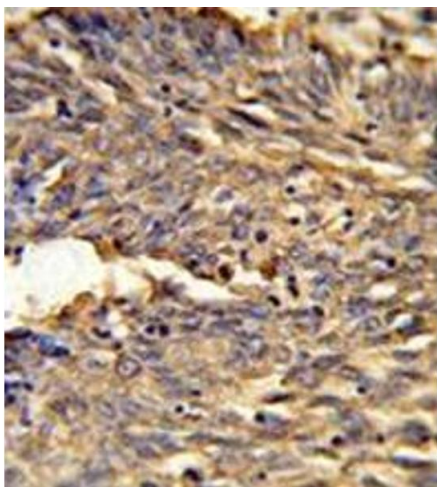
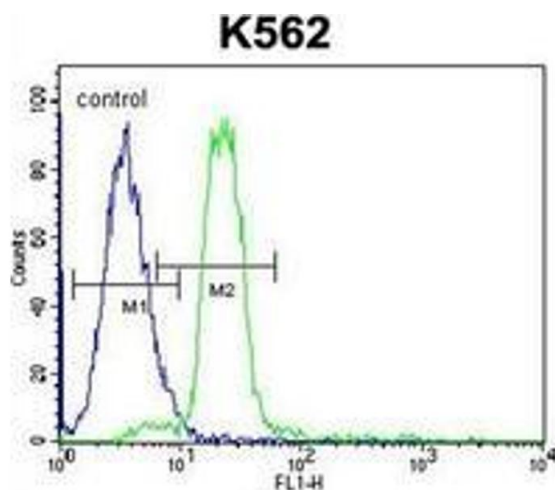
**Preservative:** Sodium azide

**Precaution of Use:** This product contains sodium azide: a POISONOUS AND HAZARDOUS SUBSTANCE which should be handled by trained staff only.

**Handling Advice:** Avoid repeated freezing and thawing.

**Storage:** 4 °C/-20 °C

**Storage Comment:** Store undiluted at 2-8 °C for one month or (in aliquots) at -20 °C for longer.



### Flow Cytometry

**Image 1.** Flow Cytometric analysis of K562 cells using HBA2 Antibody (Center) Cat.-No AP52006PU-N (right histogram) compared to a negative control cell (left histogram). FITC-conjugated goat-anti-rabbit secondary antibodies were used for the analysis.

### Immunohistochemistry (Paraffin-embedded Sections)

**Image 2.** Formalin-fixed and paraffin-embedded human lung carcinoma reacted with HBA2 Antibody (Center) followed which was peroxidase-conjugated to the secondary antibody, followed by DAB staining.

### Western Blotting

**Image 3.** Western blot analysis of HBA2 Antibody (Center) in mouse liver tissue lysates (35ug/lane). HBA2 (arrow) was detected using the purified Pab.