



[Go to Product page](#)

Datasheet for ABIN952719

anti-HEPN1 antibody (N-Term)

1 Image

Overview

Quantity:	0.4 mL
Target:	HEPN1
Binding Specificity:	AA 9-38, N-Term
Reactivity:	Human
Host:	Rabbit
Clonality:	Polyclonal
Application:	Western Blotting (WB), Enzyme Immunoassay (EIA)

Product Details

Immunogen:	KLH conjugated synthetic peptide between 9-38 amino acids from the N-terminal region of human HEPN1
Isotype:	Ig Fraction
Specificity:	This antibody recognizes Human HEPN1 (N-term).
Purification:	Protein A column, followed by peptide affinity purification

Target Details

Target:	HEPN1
Alternative Name:	HEPN1 (HEPN1 Products)
Background:	Synonyms: Putative cancer susceptibility gene protein
Molecular Weight:	10305 Da

Target Details

Gene ID: 641654

NCBI Accession: [NP_001032647](#)

Application Details

Application Notes: Optimal working dilution should be determined by the investigator.

Restrictions: For Research Use only

Handling

Format: Liquid

Concentration: 0.25 mg/mL

Buffer: PBS containing 0.09 % (W/V) Sodium Azide as preservative

Preservative: Sodium azide

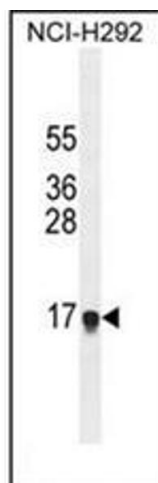
Precaution of Use: This product contains sodium azide: a POISONOUS AND HAZARDOUS SUBSTANCE which should be handled by trained staff only.

Handling Advice: Avoid repeated freezing and thawing.

Storage: 4 °C/-20 °C

Storage Comment: Store undiluted at 2-8 °C for one month or (in aliquots) at -20 °C for longer.

Images



Western Blotting

Image 1. Western blot analysis of HEPN1 Antibody (N-term) in NCI-H292 cell line lysates (35ug/lane). This demonstrates the HEPN1 antibody detected the HEPN1 protein (arrow).