

Datasheet for ABIN952725

**anti-HEXIM1 antibody (Middle Region)**[Go to Product page](#)**2** Images

## Overview

Quantity:	0.4 mL
Target:	HEXIM1
Binding Specificity:	AA 201-230, Middle Region
Reactivity:	Human, Mouse
Host:	Rabbit
Clonality:	Polyclonal
Conjugate:	This HEXIM1 antibody is un-conjugated
Application:	Western Blotting (WB), Immunohistochemistry (Paraffin-embedded Sections) (IHC (p)), Enzyme Immunoassay (EIA)

## Product Details

Immunogen:	KLH conjugated synthetic peptide between 201-230 amino acids from the Central region of human HEXIM1
Isotype:	Ig Fraction
Specificity:	This antibody recognizes Human and Mouse HEXIM1 (Center).
Purification:	Protein A column, followed by peptide affinity purification

## Target Details

Target:	HEXIM1
Alternative Name:	HEXIM1 ( <a href="#">HEXIM1 Products</a> )

## Target Details

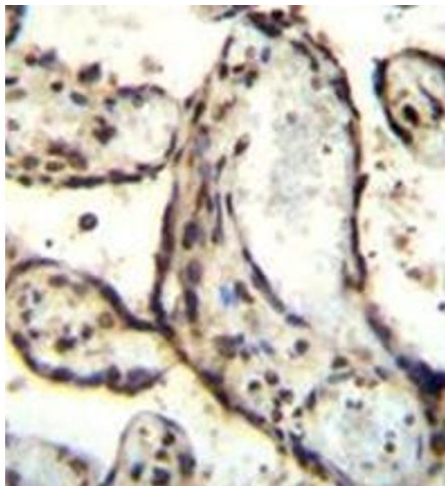
Background:	Expression of this gene is induced by hexamethylene-bis-acetamide in vascular smooth muscle cells. This gene has no introns.Synonyms: CLP1, Cardiac lineage protein 1, EDG1, Estrogen down-regulated gene 1 protein, HIS1, Hexamethylene bis-acetamide-inducible protein 1, MAQ1, Menage a quatre protein 1
Molecular Weight:	40623 Da
Gene ID:	10614
NCBI Accession:	<a href="#">NP_006451</a>

## Application Details

Application Notes:	Optimal working dilution should be determined by the investigator.
Restrictions:	For Research Use only

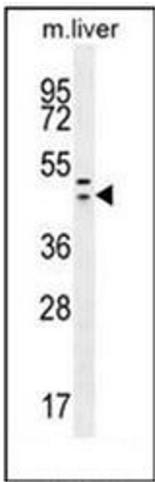
## Handling

Format:	Liquid
Concentration:	0.25 mg/mL
Buffer:	PBS containing 0.09 % (W/V) Sodium Azide as preservative
Preservative:	Sodium azide
Precaution of Use:	This product contains sodium azide: a POISONOUS AND HAZARDOUS SUBSTANCE which should be handled by trained staff only.
Handling Advice:	Avoid repeated freezing and thawing.
Storage:	4 °C/-20 °C
Storage Comment:	Store undiluted at 2-8 °C for one month or (in aliquots) at -20 °C for longer.



Immunohistochemistry (Paraffin-embedded Sections)

**Image 1.** Immunohistochemistry analysis in formalin fixed and paraffin embedded human placenta tissue reacted with AP52035PU-N followed by peroxidase conjugation of the secondary antibody and DAB staining.



Western Blotting

**Image 2.** Western blot analysis of HEXIM1 antibody (Center) in mouse liver tissue lysates (35ug/lane). This demonstrates the HEXIM1 antibody detected the HEXIM1 protein (arrow).