

Datasheet for ABIN952731  
**anti-HHLA2 antibody (N-Term)**

## 3 Images

[Go to Product page](#)

## Overview

|                      |   |
|----------------------|---|
| Quantity:            | 0.4 mL  |
| Target:              | HHLA2   |
| Binding Specificity: | AA 65-95, N-Term  |
| Reactivity:          | Human   |
| Host:                | Rabbit  |
| Clonality:           | Polyclonal  |
| Application:         | Western Blotting (WB), Flow Cytometry (FACS), Immunohistochemistry (Paraffin-embedded Sections) (IHC (p)), Enzyme Immunoassay (EIA) |

## Product Details

|               |  |
|---------------|--|
| Immunogen:    | KLH conjugated synthetic peptide between 65-95 amino acids from the N-terminal region of human HHLA2 |
| Isotype:      | Ig Fraction  |
| Specificity:  | This antibody recognizes Human HHLA2 (N-term).   |
| Purification: | Protein A column, followed by peptide affinity purification  |

## Target Details

|                   |  |
|-------------------|--|
| Target:           | HHLA2  |
| Alternative Name: | HHLA2 ( <a href="#">HHLA2 Products</a> )   |
| Background:       | Synonyms: HERV-H LTR-associating protein 2, Human endogenous retrovirus-H long terminal repeat-associating protein 2 |

## Target Details

|                   |                           |
|-------------------|---------------------------|
| Molecular Weight: | 46850 Da                  |
| Gene ID:          | 11148                     |
| NCBI Accession:   | <a href="#">NP_009003</a> |

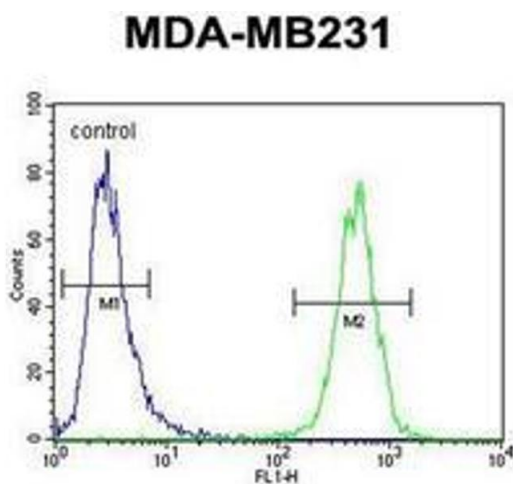
## Application Details

|                    |  |
|--------------------|--|
| Application Notes: | Optimal working dilution should be determined by the investigator. |
| Restrictions:      | For Research Use only  |

## Handling

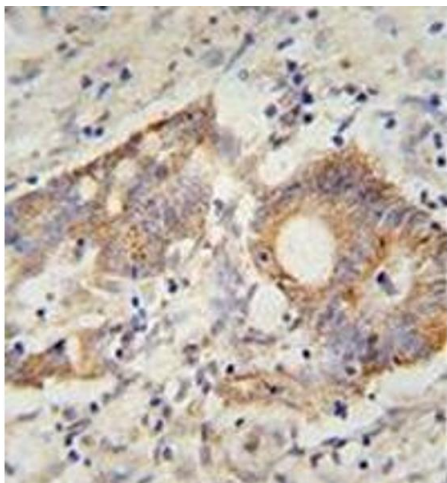
|                    |  |
|--------------------|--|
| Format:            | Liquid   |
| Concentration:     | 0.25 mg/mL   |
| Buffer:            | PBS containing 0.09 % (W/V) Sodium Azide as preservative   |
| Preservative:      | Sodium azide   |
| Precaution of Use: | This product contains sodium azide: a POISONOUS AND HAZARDOUS SUBSTANCE which should be handled by trained staff only. |
| Handling Advice:   | Avoid repeated freezing and thawing.   |
| Storage:           | 4 °C/-20 °C  |
| Storage Comment:   | Store undiluted at 2-8 °C for one month or (in aliquots) at -20 °C for longer.   |

## Images



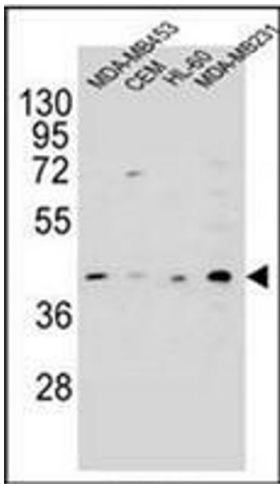
### Flow Cytometry

**Image 1.** Flow cytometric analysis of MDA-MB231 cells using AP52042PU-N (right histogram) compared to a negative control cell (left histogram). FITC-conjugated goat-anti-rabbit secondary antibodies were used for the analysis.



**Immunohistochemistry (Paraffin-embedded Sections)**

**Image 2.** Immunohistochemistry analysis in formalin fixed and paraffin embedded human colon carcinoma reacted with AP52042PU-N, which was peroxidase conjugated to the secondary antibody and followed by DAB staining.



**Western Blotting**

**Image 3.** Western blot analysis of HHLA2 Antibody (N-term) in MDA-MB453, CEM, HL-60, MDA-MB231 cell line lysates (35ug/lane). This demonstrates the HHLA2 antibody detected the HHLA2 protein (arrow).