

## Datasheet for ABIN952748 **anti-HLA B7 antibody (Middle Region)**

[Go to Product page](#)

### 1 Image

#### Overview

Quantity:	0.4 mL
Target:	HLA B7
Binding Specificity:	AA 184-212, Middle Region
Reactivity:	Human
Host:	Rabbit
Clonality:	Polyclonal
Conjugate:	This HLA B7 antibody is un-conjugated
Application:	Western Blotting (WB), Enzyme Immunoassay (EIA)

#### Product Details

Immunogen:	KLH conjugated synthetic peptide between 184-212 amino acids from the Central region of human HLA-B
Isotype:	Ig Fraction
Specificity:	This antibody recognizes Human HLA class I B7 alpha / HLA-B (Center).
Purification:	Protein A column, followed by peptide affinity purification

#### Target Details

Target:	HLA B7
Abstract:	<a href="#">HLA B7 Products</a>
Background:	HLA-B belongs to the HLA class I heavy chain paralogues. This class I molecule is a

## Target Details

heterodimer consisting of a heavy chain and a light chain (beta-2 microglobulin). The heavy chain is anchored in the membrane. Class I molecules play a central role in the immune system by presenting peptides derived from the endoplasmic reticulum lumen. They are expressed in nearly all cells. The heavy chain is approximately 45 kDa and its gene contains 8 exons. Exon 1 encodes the leader peptide, exon 2 and 3 encode the alpha1 and alpha2 domains, which both bind the peptide, exon 4 encodes the alpha3 domain, exon 5 encodes the transmembrane region and exons 6 and 7 encode the cytoplasmic tail. Polymorphisms within exon 2 and exon 3 are responsible for the peptide binding specificity of each class one molecule. Typing for these polymorphisms is routinely done for bone marrow and kidney transplantation. Hundreds of HLA-B alleles have been described. Synonyms: B-7 alpha chain, HLA class I histocompatibility antigen, HLAB, MHC class I antigen B7

Molecular Weight: 40460 Da

Gene ID: 3106

NCBI Accession: [NP\\_005505](#)

Pathways: [Human Leukocyte Antigen \(HLA\) in Adaptive Immune Response](#)

## Application Details

Application Notes: Optimal working dilution should be determined by the investigator.

Restrictions: For Research Use only

## Handling

Format: Liquid

Concentration: 0.25 mg/mL

Buffer: PBS containing 0.09 % (W/V) Sodium Azide as preservative

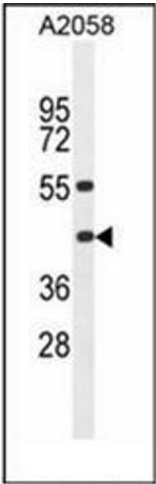
Preservative: Sodium azide

Precaution of Use: This product contains sodium azide: a POISONOUS AND HAZARDOUS SUBSTANCE which should be handled by trained staff only.

Handling Advice: Avoid repeated freezing and thawing.

Storage: 4 °C/-20 °C

Storage Comment: Store undiluted at 2-8 °C for one month or (in aliquots) at -20 °C for longer.



Western Blotting

**Image 1.** Western blot analysis of HLA-B Antibody (Center) in A2058 cell line lysates (35ug/lane). This demonstrates the HLA-B antibody detected the HLA-B protein (arrow).