

Datasheet for ABIN952755  
**anti-HLA-DRB5 antibody (Middle Region)**[Go to Product page](#)

## 2 Images

## Overview

Quantity:	0.4 mL
Target:	HLA-DRB5
Binding Specificity:	AA 49-79, Middle Region
Reactivity:	Human
Host:	Rabbit
Clonality:	Polyclonal
Conjugate:	This HLA-DRB5 antibody is un-conjugated
Application:	Western Blotting (WB), Immunohistochemistry (Paraffin-embedded Sections) (IHC (p)), Enzyme Immunoassay (EIA)

## Product Details

Immunogen:	KLH conjugated synthetic peptide between 49~79 amino acids from the Central region of human HLA class II DRB5 beta / HLA-DRB5
Isotype:	Ig Fraction
Specificity:	This antibody recognizes Human HLA class II DRB5 beta / HLA-DRB5 (Center).
Purification:	Protein A column, followed by peptide affinity purification

## Target Details

Target:	HLA-DRB5
Alternative Name:	HLA Class II DRB5 beta / HLA-DRB5 ( <a href="#">HLA-DRB5 Products</a> )

## Target Details

**Background:** HLA-DRB5 belongs to the HLA class II beta chain paralogues. This class II molecule is a heterodimer consisting of an alpha (DRA) and a beta (DRB) chain, both anchored in the membrane. It plays a central role in the immune system by presenting peptides derived from extracellular proteins. Class II molecules are expressed in antigen presenting cells (APC: B lymphocytes, dendritic cells, macrophages). The beta chain is approximately 26-28 kDa and its gene contains 6 exons. Exon one encodes the leader peptide, exons 2 and 3 encode the two extracellular domains, exon 4 encodes the transmembrane domain and exon 5 encodes the cytoplasmic tail. Within the DR molecule the beta chain contains all the polymorphisms specifying the peptide binding specificities. Typing for these polymorphisms is routinely done for bone marrow and kidney transplantation. DRB1 is expressed at a level five times higher than its paralogues DRB3, DRB4 and DRB5. The presence of DRB5 is linked with allelic variants of DRB1, otherwise it is omitted. There are 4 related pseudogenes: DRB2, DRB6, DRB7, DRB8 and DRB9. Synonyms: DR beta-5, DR2-beta-2, DRB5 beta chain, Dw2, HLA class II histocompatibility antigen, MHC class II antigen DRB5

**Molecular Weight:** 30056 Da

**Gene ID:** 3127

**NCBI Accession:** [NP\\_002116](#)

**Pathways:** [TCR Signaling](#), [Positive Regulation of Peptide Hormone Secretion](#), [Production of Molecular Mediator of Immune Response](#), [Cancer Immune Checkpoints](#), [Human Leukocyte Antigen \(HLA\) in Adaptive Immune Response](#)

## Application Details

**Application Notes:** Optimal working dilution should be determined by the investigator.

**Restrictions:** For Research Use only

## Handling

**Format:** Liquid

**Concentration:** 0.25 mg/mL

**Buffer:** PBS containing 0.09 % (W/V) Sodium Azide as preservative

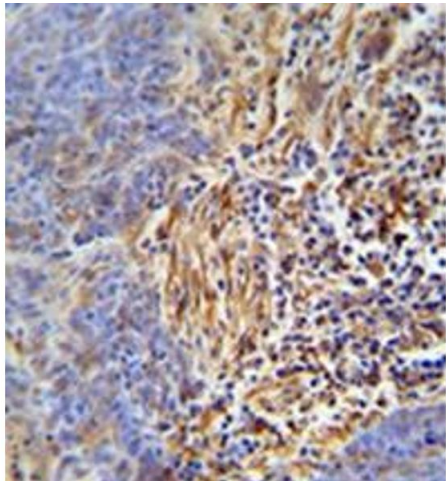
**Preservative:** Sodium azide

**Precaution of Use:** This product contains sodium azide: a POISONOUS AND HAZARDOUS SUBSTANCE which should be handled by trained staff only.

## Handling

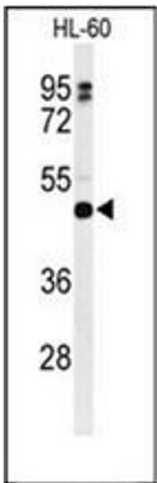
Handling Advice:	Avoid repeated freezing and thawing.
Storage:	4 °C/-20 °C
Storage Comment:	Store undiluted at 2-8 °C for one month or (in aliquots) at -20 °C for longer.

## Images



### Immunohistochemistry (Paraffin-embedded Sections)

**Image 1.** Immunohistochemistry analysis in formalin fixed and paraffin embedded human lung carcinoma reacted with HLA-DRB5 Antibody (Center) followed which was peroxidase conjugated to the secondary antibody and followed by DAB staining.



### Western Blotting

**Image 2.** Western blot analysis of HLA-DRB5 Antibody (Center) in HL-60 cell line lysates (35ug/lane). HLA-DRB5 (arrow) was detected using the purified Pab.