

Datasheet for ABIN952789  
**anti-HPR antibody (Middle Region)**

## 2 Images

[Go to Product page](#)

## Overview

Quantity:	0.4 mL
Target:	HPR
Binding Specificity:	AA 219-247, Middle Region
Reactivity:	Human
Host:	Rabbit
Clonality:	Polyclonal
Conjugate:	This HPR antibody is un-conjugated
Application:	Western Blotting (WB), Immunohistochemistry (Paraffin-embedded Sections) (IHC (p)), Enzyme Immunoassay (EIA)

## Product Details

Immunogen:	KLH conjugated synthetic peptide between 219-247 amino acids from the Central region of human HPR.
Isotype:	Ig Fraction
Specificity:	This antibody recognizes Human HPR (Center).
Purification:	Protein A column, followed by peptide affinity purification

## Target Details

Target:	HPR
Alternative Name:	HPR ( <a href="#">HPR Products</a> )

## Target Details

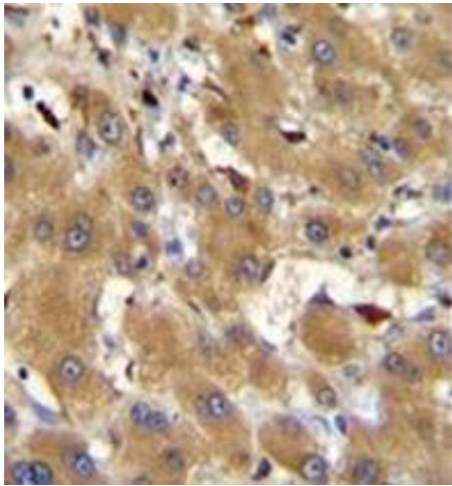
Background:	Ubiquitous transcription factor required for a diverse set of processes. It is a component of the CCR4 complex involved in the control of gene expression (By similarity).Synonyms: Haptoglobin-related protein
Molecular Weight:	39030 Da
Gene ID:	3250
NCBI Accession:	<a href="#">NP_066275</a>
Pathways:	<a href="#">Response to Water Deprivation</a>

## Application Details

Application Notes:	Optimal working dilution should be determined by the investigator.
Restrictions:	For Research Use only

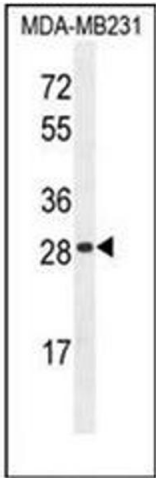
## Handling

Format:	Liquid
Concentration:	0.25 mg/mL
Buffer:	PBS containing 0.09 % (W/V) Sodium Azide as preservative
Preservative:	Sodium azide
Precaution of Use:	This product contains sodium azide: a POISONOUS AND HAZARDOUS SUBSTANCE which should be handled by trained staff only.
Handling Advice:	Avoid repeated freezing and thawing.
Storage:	4 °C/-20 °C
Storage Comment:	Store undiluted at 2-8 °C for one month or (in aliquots) at -20 °C for longer.



**Immunohistochemistry (Paraffin-embedded Sections)**

**Image 1.** Immunohistochemistry analysis in formalin fixed and paraffin embedded human hepatocarcinoma reacted with HPR Antibody (Center) followed by peroxidase conjugation of the secondary antibody and DAB staining.



**Western Blotting**

**Image 2.** Western blot analysis of HPR Antibody (Center) in MDA-MB231 cell line lysates (35ug/lane). This demonstrates the HPR antibody detected the HPR protein (arrow).