



[Go to Product page](#)

Datasheet for ABIN952794

anti-HRC antibody (Middle Region)

2 Images

Overview

Quantity:	0.4 mL
Target:	HRC
Binding Specificity:	AA 284-314, Middle Region
Reactivity:	Human
Host:	Rabbit
Clonality:	Polyclonal
Conjugate:	This HRC antibody is un-conjugated
Application:	Western Blotting (WB), Immunohistochemistry (Paraffin-embedded Sections) (IHC (p)), Enzyme Immunoassay (EIA)

Product Details

Immunogen:	KLH conjugated synthetic peptide between 284-314 amino acids from the Central region of human HRC / HCP
Isotype:	Ig Fraction
Specificity:	This antibody recognizes Human HRC / HCP (Center).
Purification:	Protein A column, followed by peptide affinity purification

Target Details

Target:	HRC
Alternative Name:	HRC / HCP (HRC Products)

Target Details

Background: This gene encodes a luminal sarcoplasmic reticulum protein identified by its ability to bind low-density lipoprotein with high affinity. The protein interacts with the cytoplasmic domain of triadin, the main transmembrane protein of the junctional sarcoplasmic reticulum (SR) of skeletal muscle. The protein functions in the regulation of releasable calcium into the SR. Synonyms: Sarcoplasmic reticulum histidine-rich calcium-binding protein

Molecular Weight: 80244 Da

Gene ID: 3270

NCBI Accession: [NP_002143](#)

Application Details

Application Notes: Optimal working dilution should be determined by the investigator.

Restrictions: For Research Use only

Handling

Format: Liquid

Concentration: 0.25 mg/mL

Buffer: PBS containing 0.09 % (W/V) Sodium Azide as preservative

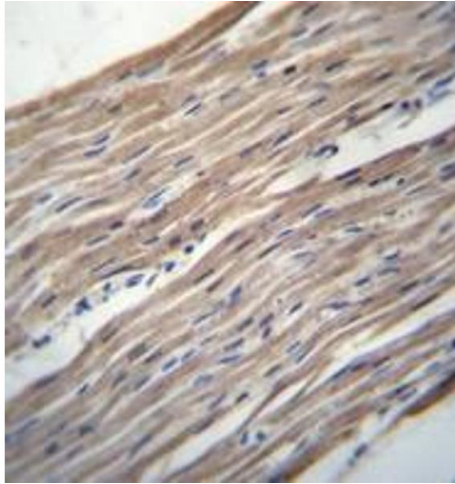
Preservative: Sodium azide

Precaution of Use: This product contains sodium azide: a POISONOUS AND HAZARDOUS SUBSTANCE which should be handled by trained staff only.

Handling Advice: Avoid repeated freezing and thawing.

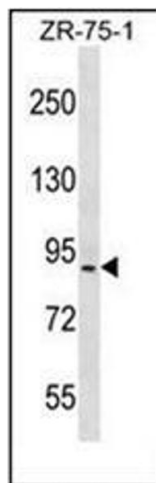
Storage: 4 °C/-20 °C

Storage Comment: Store undiluted at 2-8 °C for one month or (in aliquots) at -20 °C for longer.



Immunohistochemistry (Paraffin-embedded Sections)

Image 1. Immunohistochemistry analysis in formalin fixed and paraffin embedded human heart tissue reacted with HRC / HCR Antibody (Center) followed which was peroxidase conjugated to the secondary antibody and followed by DAB staining.



Western Blotting

Image 2. Western blot analysis of HRC / HCR Antibody (Center) in ZR-75-1 cell line lysates (35ug/lane). This demonstrates the HRC antibody detected the HRC protein (arrow).