

Datasheet for ABIN952799

anti-HSDL2 antibody (Middle Region)[Go to Product page](#)**1** Image

Overview

Quantity:	0.4 mL
Target:	HSDL2
Binding Specificity:	AA 228-258, Middle Region
Reactivity:	Human
Host:	Rabbit
Clonality:	Polyclonal
Conjugate:	This HSDL2 antibody is un-conjugated
Application:	Western Blotting (WB), Enzyme Immunoassay (EIA)

Product Details

Immunogen:	KLH conjugated synthetic peptide between 228-258 amino acids from the Central region of human HSDL2
Isotype:	Ig Fraction
Specificity:	This antibody recognizes Human HSDL2 (Center).
Purification:	Protein A column, followed by peptide affinity purification

Target Details

Target:	HSDL2
Alternative Name:	HSDL2 (HSDL2 Products)
Background:	HSDL2 has apparently no steroid dehydrogenase activity.Synonyms: C9orf99, Hydroxysteroid

Target Details

	dehydrogenase-like protein 2
Molecular Weight:	45395 Da
Gene ID:	84263
NCBI Accession:	NP_001182751

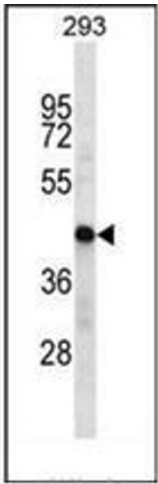
Application Details

Application Notes:	Optimal working dilution should be determined by the investigator.
Restrictions:	For Research Use only

Handling

Format:	Liquid
Concentration:	0.25 mg/mL
Buffer:	PBS containing 0.09 % (W/V) Sodium Azide as preservative
Preservative:	Sodium azide
Precaution of Use:	This product contains sodium azide: a POISONOUS AND HAZARDOUS SUBSTANCE which should be handled by trained staff only.
Handling Advice:	Avoid repeated freezing and thawing.
Storage:	4 °C/-20 °C
Storage Comment:	Store undiluted at 2-8 °C for one month or (in aliquots) at -20 °C for longer.

Images



Western Blotting

Image 1. Wwestern blot analysis of HSDL2 Antibody (Center) in 293 cell line lysates (35ug/lane). This demonstrates the HSDL2 antibody detected the HSDL2 protein (arrow).