

Datasheet for ABIN952810
anti-IAH1 antibody (Middle Region)[Go to Product page](#)

1 Image

Overview

Quantity:	0.4 mL
Target:	IAH1
Binding Specificity:	AA 85-114, Middle Region
Reactivity:	Mouse, Human
Host:	Rabbit
Clonality:	Polyclonal
Conjugate:	This IAH1 antibody is un-conjugated
Application:	Western Blotting (WB), Enzyme Immunoassay (EIA)

Product Details

Immunogen:	KLH conjugated synthetic peptide between 85-114 amino acids from the Central region of human IAH1
Isotype:	Ig Fraction
Specificity:	This antibody recognizes Human and Mouse IAH1 (Center).
Purification:	Protein A column, followed by peptide affinity purification

Target Details

Target:	IAH1
Alternative Name:	IAH1 (IAH1 Products)
Background:	Synonyms: Isoamyl acetate-hydrolyzing esterase 1 homolog

Target Details

Molecular Weight:	27599 Da
Gene ID:	285148
NCBI Accession:	NP_001034702

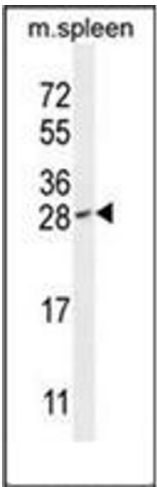
Application Details

Application Notes:	Optimal working dilution should be determined by the investigator.
Restrictions:	For Research Use only

Handling

Format:	Liquid
Concentration:	0.25 mg/mL
Buffer:	PBS containing 0.09 % (W/V) Sodium Azide as preservative
Preservative:	Sodium azide
Precaution of Use:	This product contains sodium azide: a POISONOUS AND HAZARDOUS SUBSTANCE which should be handled by trained staff only.
Handling Advice:	Avoid repeated freezing and thawing.
Storage:	4 °C/-20 °C
Storage Comment:	Store undiluted at 2-8 °C for one month or (in aliquots) at -20 °C for longer.

Images



Western Blotting

Image 1. Western blot analysis of IAH1 Antibody (Center) in mouse spleen tissue lysates (35ug/lane). This demonstrates the IAH1 antibody detected the IAH1 protein (arrow).