



[Go to Product page](#)

Datasheet for ABIN952814
anti-IBTK antibody (Middle Region)

3 Images

Overview

Quantity:	0.4 mL
Target:	IBTK
Binding Specificity:	AA 589-617, Middle Region
Reactivity:	Human
Host:	Rabbit
Clonality:	Polyclonal
Conjugate:	This IBTK antibody is un-conjugated
Application:	Western Blotting (WB), Flow Cytometry (FACS), Immunohistochemistry (Paraffin-embedded Sections) (IHC (p)), Enzyme Immunoassay (EIA)

Product Details

Immunogen:	KLH conjugated synthetic peptide between 589-617 amino acids from the Central region of human IBTK / BTKI
Isotype:	Ig Fraction
Specificity:	This antibody recognizes Human IBTK / BTKI (Center).
Purification:	Protein A column, followed by peptide affinity purification

Target Details

Target:	IBTK
Alternative Name:	IBTK / BTKI (IBTK Products)

Target Details

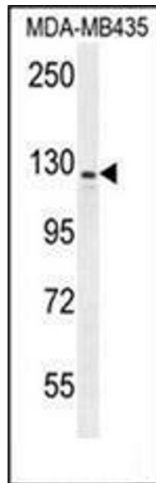
Background:	The protein encoded by this gene binds to Bruton's tyrosine kinase (BTK) and downregulates BTK's kinase activity. In addition, the encoded protein disrupts BTK-mediated calcium mobilization and negatively regulates the activation of nuclear factor-kappa-B-driven transcription.Synonyms: Inhibitor of Bruton tyrosine kinase, KIAA1417
Molecular Weight:	150528 Da
Gene ID:	25998
NCBI Accession:	NP_056340

Application Details

Application Notes:	Optimal working dilution should be determined by the investigator.
Restrictions:	For Research Use only

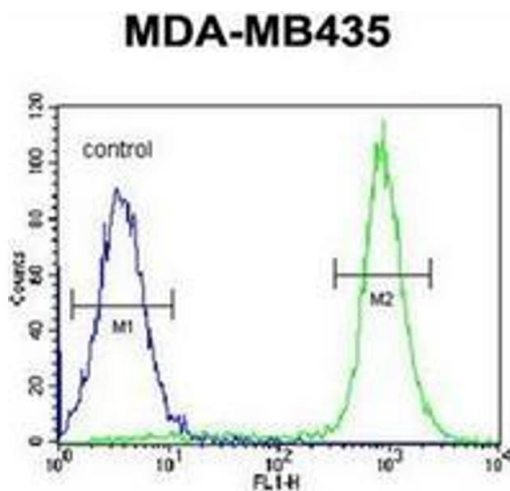
Handling

Format:	Liquid
Concentration:	0.25 mg/mL
Buffer:	PBS containing 0.09 % (W/V) Sodium Azide as preservative
Preservative:	Sodium azide
Precaution of Use:	This product contains sodium azide: a POISONOUS AND HAZARDOUS SUBSTANCE which should be handled by trained staff only.
Handling Advice:	Avoid repeated freezing and thawing.
Storage:	4 °C/-20 °C
Storage Comment:	Store undiluted at 2-8 °C for one month or (in aliquots) at -20 °C for longer.



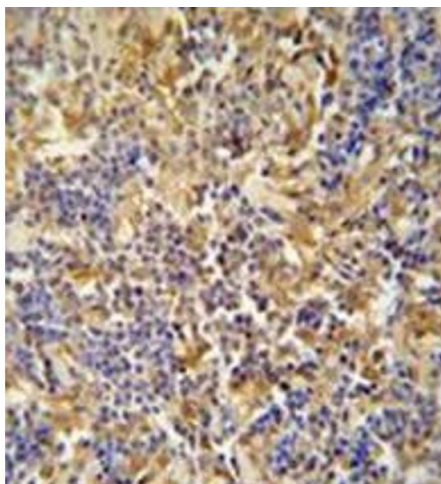
Western Blotting

Image 1. Western blot analysis of IBTK / BTKI Antibody (Center) in MDA-MB435 cell line lysates (35ug/lane). This demonstrates the IBTK antibody detected the IBTK protein (arrow).



Flow Cytometry

Image 2. Flow cytometric analysis of MDA-MB435 cells using IBTK / BTKI Antibody (Center) Cat.-No AP52138PU-N (right histogram) compared to a negative control cell (left histogram). FITC-conjugated goat-anti-rabbit secondary antibodies were used for the analysis.



Immunohistochemistry (Paraffin-embedded Sections)

Image 3. Immunohistochemistry analysis in formalin fixed and paraffin embedded human lymph tissue reacted with IBTK / BTKI Antibody (Center) followed which was peroxidase conjugated to the secondary antibody and followed by DAB staining.