

Datasheet for ABIN952815  
**anti-ID1 antibody (Middle Region)**

## 5 Images

[Go to Product page](#)

## Overview

Quantity:	0.4 mL
Target:	ID1
Binding Specificity:	AA 73-101, Middle Region
Reactivity:	Human, Mouse
Host:	Rabbit
Clonality:	Polyclonal
Conjugate:	This ID1 antibody is un-conjugated
Application:	Western Blotting (WB), Immunofluorescence (IF), Flow Cytometry (FACS), Immunohistochemistry (Paraffin-embedded Sections) (IHC (p)), Enzyme Immunoassay (EIA)

## Product Details

Immunogen:	KLH conjugated synthetic peptide between 73-101 amino acids from the Central region of Human ID1 / BHLHB24
Isotype:	Ig Fraction
Specificity:	This antibody recognizes Human and Mouse ID1 / BHLHB24 (Center).
Purification:	Protein A column, followed by peptide affinity purification

## Target Details

Target:	ID1
Alternative Name:	ID1 / BHLHB24 ( <a href="#">ID1 Products</a> )

## Target Details

**Background:** The protein encoded by this gene is a helix-loop-helix (HLH) protein that can form heterodimers with members of the basic HLH family of transcription factors. The encoded protein has no DNA binding activity and therefore can inhibit the DNA binding and transcriptional activation ability of basic HLH proteins with which it interacts. This protein may play a role in cell growth, senescence, and differentiation. Two transcript variants encoding different isoforms have been found for this gene. [provided by RefSeq].Synonyms: Class B basic helix-loop-helix protein 24, DNA-binding protein inhibitor ID-1, Inhibitor of DNA binding 1

**Molecular Weight:** 16133 Da

**Gene ID:** 3397

**NCBI Accession:** [NP\\_002156](#)

## Application Details

**Application Notes:** Optimal working dilution should be determined by the investigator.

**Restrictions:** For Research Use only

## Handling

**Format:** Liquid

**Concentration:** 0.25 mg/mL

**Buffer:** PBS containing 0.09 % (W/V) Sodium Azide as preservative

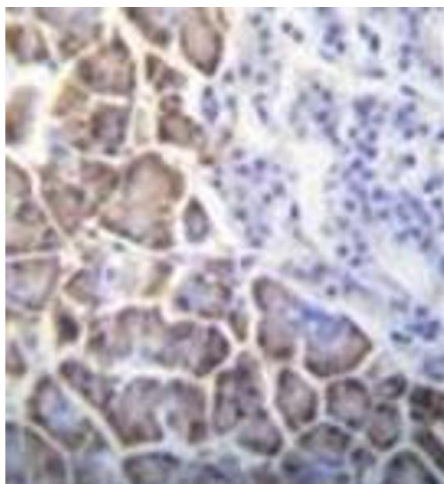
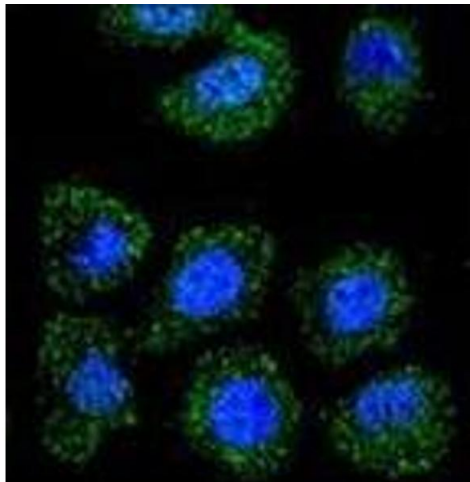
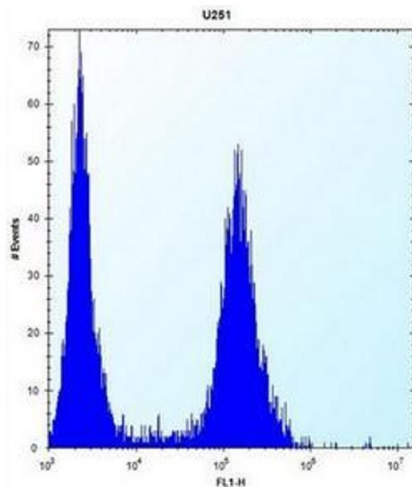
**Preservative:** Sodium azide

**Precaution of Use:** This product contains sodium azide: a POISONOUS AND HAZARDOUS SUBSTANCE which should be handled by trained staff only.

**Handling Advice:** Avoid repeated freezing and thawing.

**Storage:** 4 °C/-20 °C

**Storage Comment:** Store undiluted at 2-8 °C for one month or (in aliquots) at -20 °C for longer.



### Flow Cytometry

**Image 1.** Flow cytometric analysis of U251 cells using ID1 / BHLHB24 Antibody (Center) Cat.-No AP52144PU-N (right histogram) compared to a negative control cell (left histogram). FITC-conjugated goat-anti-rabbit secondary antibodies were used for the analysis.

### Immunofluorescence

**Image 2.** Confocal immunofluorescent analysis of ID1 / BHLHB24 Antibody (Center) Cat.-No AP52144PU-N with U-251MG cell followed by Alexa Fluor 488-conjugated goat anti-rabbit IgG (green). DAPI was used to stain the cell nuclear (blue).

### Immunohistochemistry (Paraffin-embedded Sections)

**Image 3.** Immunohistochemistry analysis in formalin fixed and paraffin embedded human pancreas tissue reacted with ID1 / BHLHB24 Antibody (Center) followed which was peroxidase conjugated to the secondary antibody and followed by DAB staining.

Please check the [product details page](#) for more images. Overall 5 images are available for ABIN952815.