



[Go to Product page](#)

Datasheet for ABIN952817
anti-IDO2 antibody (C-Term)

2 Images

Overview

Quantity:	0.4 mL
Target:	IDO2
Binding Specificity:	AA 274-303, C-Term
Reactivity:	Human
Host:	Rabbit
Clonality:	Polyclonal
Conjugate:	This IDO2 antibody is un-conjugated
Application:	Western Blotting (WB), Immunohistochemistry (Paraffin-embedded Sections) (IHC (p)), Enzyme Immunoassay (EIA)

Product Details

Immunogen:	KLH conjugated synthetic peptide between 274-303 amino acids from the C-terminal region of Human IDO2 / INDOL1
Isotype:	Ig Fraction
Specificity:	This antibody recognizes Human IDO2 / INDOL1 (C-term).
Purification:	Protein A column, followed by peptide affinity purification

Target Details

Target:	IDO2
Alternative Name:	IDO2 / INDOL1 (IDO2 Products)

Target Details

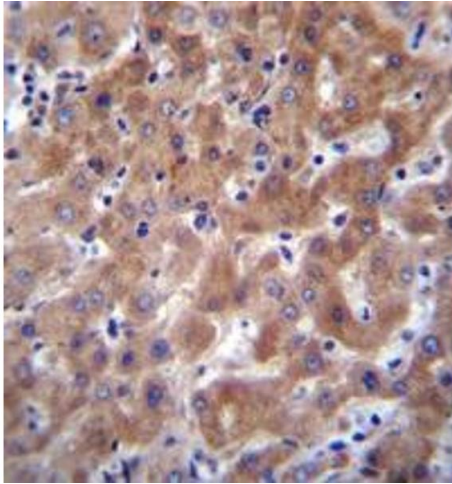
Background:	Along with the enzymes encoded by the INDO (MIM 147435) and TDO2 (MIM 191070) genes, the enzyme encoded by the INDOL1 gene metabolizes tryptophan in the kynurenine pathway (Ball et al., 2007 [PubMed 17499941]).Synonyms: 3-dioxygenase-like protein 1, Indoleamine 2, Indoleamine-pyrrole 2
Molecular Weight:	45424 Da
Gene ID:	169355
NCBI Accession:	NP_919270

Application Details

Application Notes:	Optimal working dilution should be determined by the investigator.
Restrictions:	For Research Use only

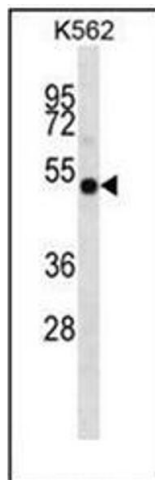
Handling

Format:	Liquid
Concentration:	0.5 mg/mL
Buffer:	PBS containing 0.09 % (W/V) Sodium Azide as preservative
Preservative:	Sodium azide
Precaution of Use:	This product contains sodium azide: a POISONOUS AND HAZARDOUS SUBSTANCE which should be handled by trained staff only.
Handling Advice:	Avoid repeated freezing and thawing.
Storage:	4 °C/-20 °C
Storage Comment:	Store undiluted at 2-8 °C for one month or (in aliquots) at -20 °C for longer.



Immunohistochemistry (Paraffin-embedded Sections)

Image 1. Immunohistochemistry analysis in formalin fixed and paraffin embedded human liver tissue reacted with IDO2 / INDOL1 Antibody (C-term) followed by peroxidase conjugation of the secondary antibody and DAB staining.



Western Blotting

Image 2. Western blot analysis of IDO2 / INDOL1 Antibody (C-term) in K562 cell line lysates (35ug/lane).