

Datasheet for ABIN952821
anti-IFI35 antibody (N-Term)[Go to Product page](#)

2 Images

Overview

Quantity:	0.4 mL
Target:	IFI35
Binding Specificity:	AA 22-49, N-Term
Reactivity:	Human
Host:	Rabbit
Clonality:	Polyclonal
Conjugate:	This IFI35 antibody is un-conjugated
Application:	Western Blotting (WB), Immunohistochemistry (Paraffin-embedded Sections) (IHC (p)), Enzyme Immunoassay (EIA)

Product Details

Immunogen:	KLH conjugated synthetic peptide between 22-49 amino acids from the N-terminal region of Human IFI3 Genename: IFI35
Isotype:	Ig Fraction
Specificity:	This antibody recognizes Human IFI35 (N-term).
Cross-Reactivity (Details):	Species reactivity (tested):Human.
Purification:	Protein A column, followed by peptide affinity purification

Target Details

Target:	IFI35
---------	-------

Target Details

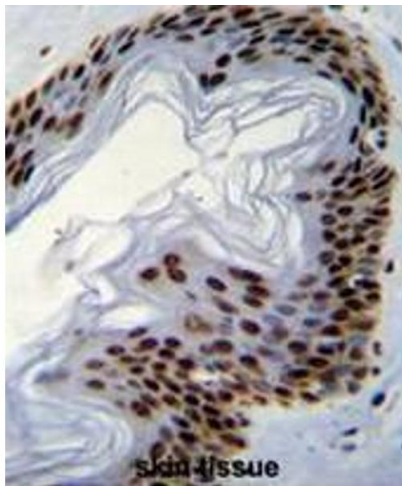
Alternative Name:	IFI35 / IFP35 (IFI35 Products)
Background:	Inhibins and activins inhibit and activate, respectively, the secretion of follitropin by the pituitary gland. Inhibins/activins are involved in regulating a number of diverse functions such as hypothalamic and pituitary hormone secretion, gonadal hormone secretion, germ cell development and maturation, erythroid differentiation, insulin secretion, nerve cell survival, embryonic axial development or bone growth, depending on their subunit composition. Inhibins appear to oppose the functions of activins. Synonyms: IFI-35, Interferon-induced 35 kDa protein
Molecular Weight:	31546 Da
Gene ID:	3430
NCBI Accession:	NP_005524

Application Details

Application Notes:	Optimal working dilution should be determined by the investigator.
Restrictions:	For Research Use only

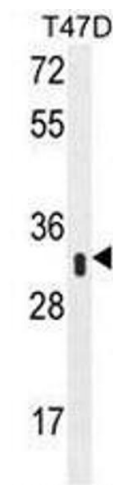
Handling

Format:	Liquid
Concentration:	0.25 mg/mL
Buffer:	PBS, 0.09 % (W/V) Sodium Azide
Preservative:	Sodium azide
Precaution of Use:	This product contains sodium azide: a POISONOUS AND HAZARDOUS SUBSTANCE which should be handled by trained staff only.
Handling Advice:	Avoid repeated freezing and thawing.
Storage:	4 °C/-20 °C
Storage Comment:	Store undiluted at 2-8 °C for one month or (in aliquots) at -20 °C for longer.



Immunohistochemistry (Paraffin-embedded Sections)

Image 1. Formalin fixed, paraffin embedded human skin tissue stained with IFI35 Antibody (N-term) followed by peroxidase conjugation of the secondary antibody and DAB staining.



Western Blotting

Image 2. Western blot analysis of IFI35 Antibody (N-term) Cat.-No AP52151PU-N in T47D cell line lysates (35µg/lane). This demonstrates the IFI35 antibody detected the IFI35 protein (arrow).