

Datasheet for ABIN952824

**anti-IFITM5 antibody (Middle Region)**[Go to Product page](#)**1** Image

## Overview

Quantity:	0.4 mL
Target:	IFITM5
Binding Specificity:	AA 55-83, Middle Region
Reactivity:	Human, Mouse
Host:	Rabbit
Clonality:	Polyclonal
Conjugate:	This IFITM5 antibody is un-conjugated
Application:	Western Blotting (WB), Enzyme Immunoassay (EIA)

## Product Details

Immunogen:	KLH conjugated synthetic peptide between 55-83 amino acids from the Central region of human IFITM5
Isotype:	Ig Fraction
Specificity:	This antibody reacts to IFITM5.
Cross-Reactivity (Details):	Species reactivity (tested): Human and Mouse.
Purification:	Affinity chromatography on Protein A

## Target Details

Target:	IFITM5
Alternative Name:	IFITM5 ( <a href="#">IFITM5 Products</a> )

## Target Details

Background:	Synonyms: Interferon-induced transmembrane protein 5
Molecular Weight:	14378 Da
Gene ID:	387733
NCBI Accession:	<a href="#">NP_001020466</a>

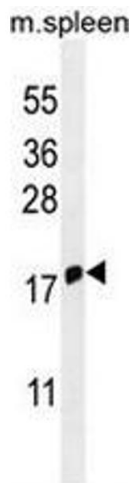
## Application Details

Application Notes:	Optimal working dilution should be determined by the investigator.
Restrictions:	For Research Use only

## Handling

Format:	Liquid
Concentration:	0.25 mg/mL
Buffer:	PBS, 0.09 % (W/V) sodium azide
Preservative:	Sodium azide
Precaution of Use:	This product contains sodium azide: a POISONOUS AND HAZARDOUS SUBSTANCE which should be handled by trained staff only.
Handling Advice:	Avoid repeated freezing and thawing.
Storage:	4 °C/-20 °C
Storage Comment:	Store the antibody undiluted at 2-8 °C for one month or (in aliquots) at -20 °C for longer.

## Images



### Western Blotting

**Image 1.** IFITM5 Antibody (Center) western blot analysis in mouse spleen tissue lysates (35µg/lane). This demonstrates the IFITM5 antibody detected the IFITM5 protein (arrow).