

Datasheet for ABIN952829
anti-IFT88 antibody (C-Term)[Go to Product page](#)

4 Images

Overview

Quantity:	0.4 mL
Target:	IFT88
Binding Specificity:	AA 798-827, C-Term
Reactivity:	Human, Mouse
Host:	Rabbit
Clonality:	Polyclonal
Conjugate:	This IFT88 antibody is un-conjugated
Application:	Western Blotting (WB), Immunofluorescence (IF), Enzyme Immunoassay (EIA)

Product Details

Immunogen:	KLH conjugated synthetic peptide between 798-827 amino acids from the C-terminal region of human IFT88
Isotype:	Ig Fraction
Specificity:	This antibody reacts to IFT88.
Cross-Reactivity (Details):	Species reactivity (tested): Human and Mouse.
Purification:	Affinity chromatography on Protein A

Target Details

Target:	IFT88
Alternative Name:	IFT88 (IFT88 Products)

Target Details

Background: This gene encodes a member of the tetratrico peptide repeat (TPR) family. Mutations of a similar gene in mouse can cause polycystic kidney disease. Two transcript variants encoding distinct isoforms have been identified for this gene. [provided by RefSeq].Synonyms: Intraflagellar transport protein 88 homolog, Recessive polycystic kidney disease protein Tg737 homolog, TG737, TPR repeat protein 10, TTC10, Tetratricopeptide repeat protein 10

Molecular Weight: 94270 Da

Gene ID: 8100

NCBI Accession: [NP_006522](#)

Pathways: [Hedgehog Signaling](#), [Sensory Perception of Sound](#)

Application Details

Application Notes: Optimal working dilution should be determined by the investigator.

Restrictions: For Research Use only

Handling

Format: Liquid

Concentration: 0.25 mg/mL

Buffer: PBS, 0.09 % (W/V) sodium azide

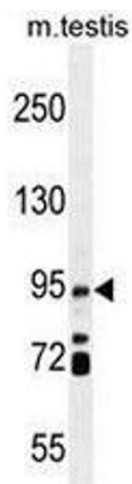
Preservative: Sodium azide

Precaution of Use: This product contains sodium azide: a POISONOUS AND HAZARDOUS SUBSTANCE which should be handled by trained staff only.

Handling Advice: Avoid repeated freezing and thawing.

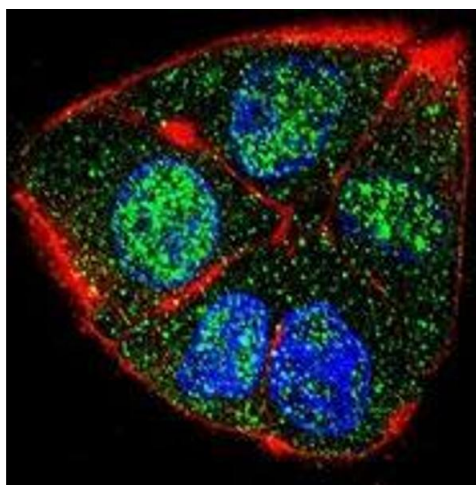
Storage: 4 °C/-20 °C

Storage Comment: Store the antibody undiluted at 2-8 °C for one month or (in aliquots) at -20 °C for longer.



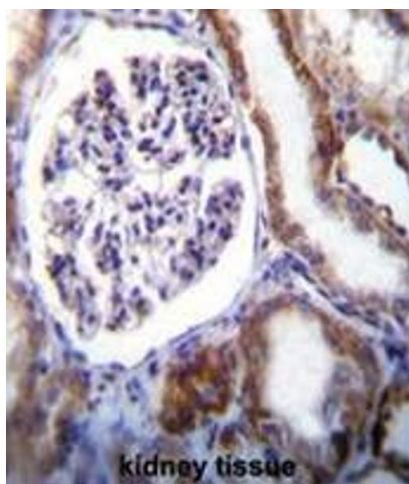
Western Blotting

Image 1. IFT88 Antibody (C-term) western blot analysis in mouse testis tissue lysates (35µg/lane). This demonstrates the IFT88 antibody detected the IFT88 protein (arrow).



Immunofluorescence

Image 2. Confocal immunofluorescent analysis of IFT88 Antibody (C-term) (Cat#AP52161PU-N) with HepG2 cell followed by Alexa Fluor 488-conjugated goat anti-rabbit IgG (green). Actin filaments have been labeled with Alexa Fluor 555 phalloidin (red). DAPI was used to stain the cell nuclear (blue).



Immunohistochemistry (Paraffin-embedded Sections)

Image 3. IFT88 Antibody (C-term) immunohistochemistry analysis in formalin fixed and paraffin embedded human kidney tissue followed by peroxidase conjugation of the secondary antibody and DAB staining. This data demonstrates the use of IFT88 Antibody (C-term) for immunohistochemistry. Clinical relevance has not been evaluated.

Please check the [product details page](#) for more images. Overall 4 images are available for ABIN952829.