

Datasheet for ABIN952830

anti-IGBP1 antibody (Middle Region)



[Go to Product page](#)

1 Image

Overview

Quantity:	0.4 mL
Target:	IGBP1
Binding Specificity:	AA 141-171, Middle Region
Reactivity:	Human
Host:	Rabbit
Clonality:	Polyclonal
Conjugate:	This IGBP1 antibody is un-conjugated
Application:	Western Blotting (WB), Enzyme Immunoassay (EIA)

Product Details

Immunogen:	KLH conjugated synthetic peptide between 141-171 amino acids from the Central region of human IGBP1
Isotype:	Ig Fraction
Specificity:	This antibody reacts to IGBP1.
Cross-Reactivity (Details):	Species reactivity (tested):Human.
Purification:	Affinity chromatography on Protein A

Target Details

Target:	IGBP1
Alternative Name:	IGBP1 (IGBP1 Products)

Target Details

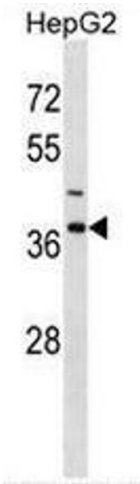
Background:	The proliferation and differentiation of B cells is dependent upon a B-cell antigen receptor (BCR) complex. Binding of antigens to specific B-cell receptors results in a tyrosine phosphorylation reaction through the BCR complex and leads to multiple signal transduction pathways.Synonyms: B-cell signal transduction molecule alpha 4, CD79a-binding protein 1, IBP1, Immunoglobulin-binding protein 1, NY-REN-16, Protein alpha-4, Renal carcinoma antigen NY-REN-16
Molecular Weight:	39222 Da
Gene ID:	3476
NCBI Accession:	NP_001542

Application Details

Application Notes:	Optimal working dilution should be determined by the investigator.
Restrictions:	For Research Use only

Handling

Format:	Liquid
Concentration:	0.25 mg/mL
Buffer:	PBS, 0.09 % (W/V) sodium azide
Preservative:	Sodium azide
Precaution of Use:	This product contains sodium azide: a POISONOUS AND HAZARDOUS SUBSTANCE which should be handled by trained staff only.
Handling Advice:	Avoid repeated freezing and thawing.
Storage:	4 °C/-20 °C
Storage Comment:	Store the antibody undiluted at 2-8 °C for one month or (in aliquots) at -20 °C for longer.



Western Blotting

Image 1. IGBP1 Antibody (Center) western blot analysis in HepG2 cell line lysates (35µg/lane). This demonstrates the IGBP1 antibody detected the IGBP1 protein (arrow).