

Datasheet for ABIN952862

anti-IGHG1 antibody (Middle Region)[Go to Product page](#)**2** Images

Overview

Quantity:	0.4 mL
Target:	IGHG1
Binding Specificity:	AA 154-180, Middle Region
Reactivity:	Human
Host:	Rabbit
Clonality:	Polyclonal
Conjugate:	This IGHG1 antibody is un-conjugated
Application:	Western Blotting (WB), Enzyme Immunoassay (EIA)

Product Details

Immunogen:	KLH conjugated synthetic peptide between 154-180 amino acids from the Central region of human IGHG1
Isotype:	Ig Fraction
Cross-Reactivity (Details):	Species reactivity (tested):Human.
Purification:	Affinity chromatography on Protein A

Target Details

Target:	IGHG1
Alternative Name:	IGHG1 (IGHG1 Products)
Background:	Synonyms: Ig gamma-1 chain C region

Target Details

Molecular Weight: 36106 Da

Gene ID: 9606

Application Details

Application Notes: Optimal working dilution should be determined by the investigator.

Restrictions: For Research Use only

Handling

Format: Liquid

Concentration: 0.25 mg/mL

Buffer: PBS, 0.09 % (W/V) sodium azide

Preservative: Sodium azide

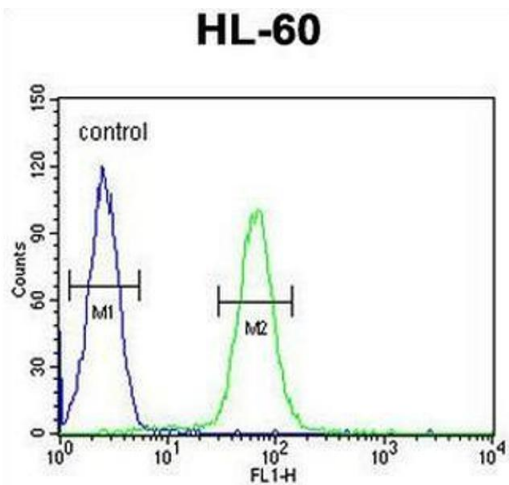
Precaution of Use: This product contains sodium azide: a POISONOUS AND HAZARDOUS SUBSTANCE which should be handled by trained staff only.

Handling Advice: Avoid repeated freezing and thawing.

Storage: 4 °C/-20 °C

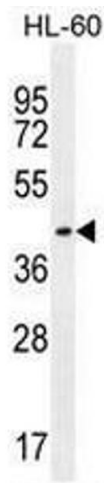
Storage Comment: Store the antibody undiluted at 2-8 °C for one month or (in aliquots) at -20 °C for longer.

Images



Flow Cytometry

Image 1. IGHG1 Antibody (Center) flow cytometric analysis of HL-60 cells (right histogram) compared to a negative control cell (left histogram). FITC-conjugated goat-anti-rabbit secondary antibodies were used for the analysis.



Western Blotting

Image 2. IGHG1 Antibody (Center) western blot analysis in HL-60 cell line lysates (35µg/lane). This demonstrates the IGHG1 antibody detected the IGHG1 protein (arrow).